



**RACCORDS ET ACCESSOIRES**



## FILIALES ETRANGERES

- EUROPE**

**AUTRICHE**  
Metal Work Pneumatic GmbH  
Josef - Wilberger - Strasse 1  
A - 6020 Innsbruck - Autriche  
Tel. 0043 512 26 22 61  
Fax 0043 512 26 22 62  
metalwork@metalwork.at

**AMERIQUE**

**BRESIL**  
Metal Work Pneumatic do Brasil Ltda  
RIO GRANDE DO SUL  
Av. Thomas Edison, 2648 Scharlauf  
CEP. 93125 - 140  
São Leopoldo/RS - Bresil  
Tel. 0055 51 3590 - 7100  
Fax 0055 51 3590 - 7111  
metalwork@metalwork.com.br

**ASIE - OCEANIE**

**AUSTRALIE**  
Metal Work AUSTRALASIA PTY Ltd  
P.O. Box 6483  
Wetherill Park BC NSW 2164  
Unit 1/6 Hume Road Smithfield  
NSW 2164  
Tel. 61 2 97 25 35 99  
Fax 61 2 97 25 23 61  
rswsales@metalwork.com.au  
**VICTORIA BRANCH**  
P.O. Box 4209  
Dandenong South VIC 3164  
10 Mickle Street  
Dandenong VIC 3175  
Tel. 03 97 06 67 18  
Fax 03 97 06 67 19  
vicsales@metalwork.com.au

**BELGIQUE**  
Metal Work België/Belgique  
Mechelse Steenweg 277  
B-1800 Vilvoorde - Belgique  
Tel. 02 75 16 120  
Fax 02 75 16 161  
metalwork@metalworkpneumatic.be

**PORTUGAL**  
Metal Work Portugal Lda  
Estrada Nacional, 1  
P.C. Emiauto Pav-D Sobreiro Torio  
3850 - Albergaria a Velha - Portugal  
Tel. 0035 12 34 52 54 25  
Fax 0035 12 34 52 54 26

**USA**  
Metal Work Pneumatic USA, Inc.  
1120 Eden Road, Suite 106  
Arlington, TX 76001  
Tel. 817 - 701 - 4000  
Fax 817 - 701 - 4004  
metalwork@metalwork.org

**DANEMARK**  
Metal Work Danmark A/S  
Korskildelund 1  
2670 Greve - Danemark  
Tel. 70 22 23 11  
Fax 70 22 27 59  
metalwork@metalwork.dk

**ESPAGNE**  
Metal Work Iberica S.A.  
Pol. Ind. Can Magi  
c/Can Magi, 9  
08210 Barbera del Valles  
(Barcelona) - Espagne  
metalwork@metalwork.es  
Tel. 937 180 244  
Fax 937 188 070  
**DELEGACION NORTE**  
Tel. 946 203 999  
Fax 946 202 642  
48220 Abadino (Bizkaia)  
**DELEGACION CENTRO**  
Tel. 91 658 60 48  
Fax 91 658 63 51  
28700 Sebastian de los Reyes (Madrid)  
**DELEGACION LEVANTE**  
Tel. 96 510 62 92  
Fax 96 510 62 93  
03113 Alicante

**FINLANDE**  
Metal Work Finland OY  
Lätkiseppäntie 4  
00620 Helsinki - Finlande  
Tel. 09 731 38 270  
Fax 09 272 2712  
metalwork@metalwork.fi

**FRANCE**  
Metal Work France SARL  
Parc d'Activités de l'Esplanade  
14 Rue Enrico Fermi  
77462 Saint Thibault des Vignes  
France  
Tel. 01 60 94 00 00  
Fax 01 60 94 01 94  
metalwork@metalwork.fr  
**AGENCE SUD-EST**  
Parc du Chiène  
7/9 Rue du 35<sup>ème</sup>  
Régiment d'Aviation - BP 50  
69672 Bron Cedex - France  
Tel. 04 72 15 00 00  
Fax 01 60 94 01 94

**SUEDE**  
Metal Work Sverige AB  
Modemgatan, 7  
235 39 Vellinge - Suede  
Tel. 040 42 07 00  
Fax 040 42 07 20  
metalwork@metalwork.se

**UK**  
Metal Work Uk Ltd  
Blackhill drive - Wolverton Mill  
Milton Keynes - MK 12 5TS  
Tel. 01908 22 22 88  
Fax 01908 22 28 24  
sales@metalwork.co.uk

**ALLEMAGNE**  
Metal Work Deutschland GmbH  
Kellenstrasse 3a  
85095 Denkendorf  
Allemagne  
Tel. 08466 9514-0  
Fax 08466 9514-26  
metalwork@metalwork.de

**UKRAINE**  
Metal Work Ukraina  
B. Chmielnickiego str. 106  
70024 Lviv - Ukraine  
Tel. +380 32 245 94 34  
Fax +380 32 245 94 35

**PAYS-BAS**  
Metal Work Nederland B.V.  
Postbus 90 - 6710 BB EDE  
Vollastraat 9 - 6716 AJ EDE Pays-Bas  
Tel. 0031 0318 66 51 11  
Fax 0031 0318 66 51 15  
metalwork@metalwork.nl

**CHINE**  
Metal Work Pneumatic Components  
(Shanghai) Co., Ltd.  
Block C1, N°3, Fulan third Road  
201906 - Booshan District, Shanghai  
Chine  
Tel. 0086-21-36043088  
Fax 0086-21-36043077

**MALAISIE**  
Metal Work Pneumatic (Malaysia)  
Sdn Bhd  
52 Jalan Pju 1A/14(TP) 5  
Taman Perindustrian Jaya Pju 1A  
46050 Petaling Jaya Selangor Darul  
Ehsan - Malaisie  
Tel. 0060 37 84 54 228  
Fax 0060 37 84 50 228  
mwprnl@streemyc.com

**THAÏLANDE**  
Metal Work Pneumatic (Thailand) Co. Ltd  
29/67 Moo 2, 345 Road  
Lumpo, Bangbuatong,  
Nonthaburi 11110 - Thaïlande  
Tel. 00662 961 7000  
Fax 00662 961 7227  
metalwork@metalwork.co.th

## REVENDEURS OFFICIELS

### EUROPE

#### BULGARIE

TechnoKom Co Ltd  
4, Naycho Tzanov str.  
4000 Plovdiv - Bulgarie  
Tel. 00359 32 665 088  
Fax 00359 32 665 099  
www.technokom.bg  
info@technokom.bg

#### CHYPRE

Andrew Chr. - Demetriades Ltd.  
Corner Atakos Nemeseos ST  
Pallouriotissa - P.O. Box 9068  
1620 Nicosia - Chypre  
Tel. 00357 22 43 14 50 (4 lines)  
Fax 00357 22 43 73 15  
a.c.demetriades@cytanet.com.cy

#### IRLANDE

Pneumatics Ltd  
Old Naas Road - Bluebell  
Dublin 12 - Irlande  
Tel. 003531 45 68 111  
Fax 003531 45 68 108

#### GRECE

Har. E. Akritidis & Co.  
26 Str. Monastiriou  
P.O. Box 1284 - PC 57022  
Thessaloniki - Grece  
Tel. 0030 23 10 52 24 11  
Fax 0030 23 10 53 59 92  
akritidi@otenet.gr

#### MACEDOINE

Devit Compressor and  
Pneumatic Systems  
Ul. Razlovska Vostante 24/13  
MK - 1000 SKOPJE - Macedoine  
Tel. 0038 97 02 25 674  
Fax 0038 92 36 15 48  
devit@unet.com.mk

#### NORVEGE

SERVI MOTION CONTROL AS  
Org. nr. 936 370 446  
Haugenvn 2, Pb. 3230,  
1402 SKI - Norvege  
Tel. 64 97 97 97  
Fax 64 97 98 99  
www.servi.no  
servi@servi.no

#### REPUBLIQUE TCHEQUE ET SLOVENIE

VT-FLEX s.r.o.  
Tesinska 288  
739 34 Senov  
Republique Tchèque et Slovenie  
Tel. 00420 59 67 48 577  
Fax 00420 59 67 28 010  
www.vt-flex.com  
sales@vt-flex.com

#### ROUMANIE

Novo trade s.r.l.  
Str. Libertatii, 315  
Apohida, Cluj - Roumanie  
Tel. 00 40 264-434100  
Fax 00 40 264-406613  
novotech@novotech.ro

#### SLOVENIE, CROATIE et SERBIE

Lipro d.o.o.  
Ulica 15.maja 22 - 6000 Koper  
Capodistria - Slovenie  
Tel. 0038 65 62 51 343  
Fax 0038 65 62 51 344  
ljpro@siol.net

#### SUISSE

Tri-Matic AG  
Bösch 82 - CH 6331 Hünenberg  
Suisse  
Tel. 0041 41 780 22 22  
Fax 0041 41 780 03 60  
www.tri-matic.ch  
info@tri-matic.ch

#### TURQUIE

HPA Teknoloji Geliştirme Makina ve  
Yedek Parça İmalat  
San. İç ve Dış Tic. Ltd. Şti.  
1201/1 Sokak No: 4/A  
P21 Yenisehir - Izmir - Turquie  
Tel. 0090 232 469 7961  
449 33 92  
449 0962  
449 36 01  
Fax 0090 232 433 9625  
457 17 89

#### HONGRIE

ENTRA-SYS KFT  
Bakay Nándor u.24.  
H-6724 Szeged - Hongrie  
Tel. 0036 62 468 478  
62 547 267  
62 547 268  
Fax 0036 62 421 403  
www.entra-sys.hu  
entra-sys@vnet.hu

### AFRIQUE

#### ALGERIE

SARL DELTA CONTROL  
Rue Yahia Belhayat, 09  
16035 Hydra Alger - Algerie  
Tel. 0021 32 16 92 557  
Fax 0021 32 16 04 250  
deltacontrol@gmail.com

#### EGYPTE

El Masry for Industrial Services Ltd  
EL-Obour ind.  
Asitania - 11371 Cairo  
Egypte  
Tel. 00202 27 45 716  
Fax 00202 27 42 916  
t.elmasry@menanet.net

#### MAROC

Afric Roulement  
125 - 129, Bd. Ibn Tachfine  
Casablanca - Maroc  
Tel. 022 40 70 10 - 13  
Fax 022 40 70 14  
www.aroulement.com  
roulement@iam.net.ma

### AMERIQUE

#### CHILI

Tecnica Thomas C.Sargent  
S.A.C.I.  
Av. Presidente Bulnes, 205  
Santiago - Chili  
Tel. 00562 5103043  
Fax 00562 6983989

#### ECUATEUR

Ecuadoriana Industrial Termoval  
Cia Ltda  
Concepcion 676 Y Valparaiso  
Quito - Equateur  
Tel. 0059 32 22 81 921  
Fax 0059 32 29 52 888  
e\_industrial@hotmail.com  
www.ecuatorianaindustrial.com

#### URUGUAY

Fidemar S.A.  
Minas 1634 - CP 11200  
Montevideo - Uruguay  
Tel. 598 2 40 21 717  
Fax 598 2 40 21 719  
www.fidemar.com.uy  
info@fidemar.com.uy

#### VENEZUELA

Neumatica Rotonda c.a.  
Prolongacion Av. Michelena  
C.C. Atlas, Local B-9  
Valencia, Edo. Carabobo  
Venezuela  
Tel. 0058 241 83 26 464  
Fax 0058 241 83 26 283  
www.neumaticarotonda.com  
ventas@neumaticarotonda.com

### ASIE - OCEANIE

#### EMIRATS ARABES UNIS

ACME Industrial Hardware  
Trading L.L.C.  
P.O. Box 3636  
Dubai United UAE  
Tel. 009714 22 38 897  
Fax 009714 22 16 698  
acmedxb@eim.ae

#### COREE DU SUD

Seowon Corporation  
1001 Ilsan Technotown  
1141-1 Beksuk-Dong  
Ilsandong-Gu, Goyang City  
Gyunggi-Do 410-722  
Coree de Sud  
Tel. 0082 31 90 61 100  
Fax 0082 31 90 61 101  
mail@seowoncorp.com  
www.seowoncorp.com

#### ISRAEL

Conlog Ltd  
7 Leshem St.  
49134 Petach Tikva - Israel  
Tel. 00972 3 92 69 595  
Fax 00972 3 92 33 367  
www.conlog.co.il  
conlog@conlog.co.il

#### TAIWAN

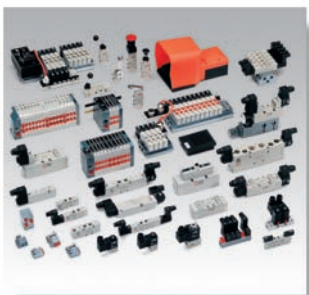
Century Automation Corporation  
5F-8, no.1 Wu-Chuan 1 St.Road  
Hsin  
Taipei Hsien-Taiwan  
Tel. 00886222988436  
Fax 00886222988436  
century@cenaauto.com.tw

# AUTRES PRODUITS DE LA GAMME.....



## ACTIONNEURS

Vérins pneumatiques  
Unités de guidage  
Tables de translation  
Vérins rotatifs  
Pincés



## DISTRIBUTEURS

A commande manuelle  
A commande mécanique  
A commande pneumatique  
A commande électrique  
Ilots de distributions  
Bus de terrain



## ENSEMBLES FRL

**Skillair:** Raccordement G1/4 à G2

**Bit:** Raccordement G1/8 et G1/4

**New Deal:** Raccordement G1/4 à G1

**One:** Raccordement G1/4 à G1

# .....ET LA NOUVEAUTE 2007



4 NOUVELLES SERIES DE  
MICRO-REGULATEURS DE DEBIT AUX  
CARACTERISTIQUES INNOVANTES

Voir page 31 à 33

## SOMMAIRE

RACCORDS INSTANTANES LAITON NICKELE	Page 6
RACCORDS INSTANTANES TECHNO-POLYMERE	Page 10
RACCORDS INSTANTANES POUR L'INDUSTRIE ALIMENTAIRE SERIE F	Page 14
RACCORDS SERIE A	Page 16
ADAPTEURS NPT/BSP	Page 19
RACCORDS SERIE B	Page 20
RACCORDS SERIE C	Page 22
RACCORDS SERIE D	Page 24
COUPLEURS RAPIDES POUR AIR COMPRESSE SERIE IAC	Page 25
COUPLEURS RAPIDES POUR FLUIDE BASSE PRESSION SERIE ICS	Page 26
RACCORDS FONCTIONS <del>lineonline</del>	Page 27
MICRO-REGULATEURS DE DEBIT SERIE MRF POUR VERINS	Page 31
MICRO-REGULATEURS DE DEBIT SERIE MRF POUR DISTRIBUTEURS	Page 32
MICRO-REGULATEURS DE DEBIT SERIE BIDIRECTIONNELS	Page 33
CLAPETS PILOTES ET CLAPETS ANTI-RETOUR PILOTES SERIE STP	Page 34
BARRETTES-RACCORDS TOURNANTS	Page 35
VANNES-VANNES DE REGLAGES DE DEBIT	Page 36
SILENCIEUX	Page 37
ACCESSOIRES	Page 38
COUPES-TUBES - SOUFFLETTES - MANOMETRES	Page 39
TUBES	Page 40

# RACCORDS INSTANTANES

## RL1



Cod.	Ref.
2001B01	R1 3 M3
2001B02	R1 3 M5
2001A01	R1 3.17 M3
2001A02	R1 3.17 M5
2L01001	RL1 4 M5
2L01020	RL1 4 M7
2L01002	RL1 4 1/8
2L01003	RL1 4 1/4
2001004	R1 5 M5
2001005	R1 5 1/8
2001006	R1 5 1/4
2L01000	RL1 6 M5
2L01021	RL1 6 M7
2L01101	RL1 6 M12x1,5
2L01007	RL1 6 1/8
2L01008	RL1 6 1/4
2L01102	RL1 8 M12x1,5
2L01009	RL1 8 1/8
2L01010	RL1 8 1/4

Cod.	Ref.
2L01011	RL1 8 3/8
2L01012	RL1 10 1/4
2L01013	RL1 10 3/8
2L01018	RL1 10 1/2
2001019	RL1 12 1/4
2001014	RL1 12 3/8
2001015	RL1 12 1/2
2001016	RL1 14 3/8
2001017	RL1 14 1/2

## RL1/C



Cod.	Ref.
2L01C02	RL1C 4 1/8
2L01C07	RL1C 6 1/8
2L01C08	RL1C 6 1/4
2001Z07	RL1Z 6 12x1 con.
2001Z08	RL1Z 6 12x1,25 con.
2L01C09	RL1C 8 1/8
2L01C10	RL1C 8 1/4
2L01C11	RL1C 8 3/8
2L01C13	RL1C 10 1/4
2L01C14	RL1C 10 3/8
2001C15	RL1C 12 3/8
2001C16	RL1C 12 1/2

## RL2



Cod.	Ref.
2002B02	R2 3 M5
2002A02	R2 3.17 M5
2L02001	RL2 4 1/8
2L02002	RL2 4 1/4
2002003	R2 5 1/8
2002004	R2 5 1/4
2L02005	RL2 6 1/8
2L02006	RL2 6 1/4
2002007	RL2 8 1/8
2L02008	RL2 8 1/4
2L02009	RL2 10 1/4
2L02010	RL2 10 3/8
2L02011	RL2 12 3/8
2L02012	RL2 12 1/2

## CONIQUE

## RL3



Cod.	Ref.
2003A02	R3 3 M8x0.75
2003A01	R3 3.17 M8x0.75
2L03001	RL3 4 M11x1
2003002	R3 5 M14x1
2L03003	RL3 6 M13x1
2L03004	RL3 8 M15x1
2L03005	RL3 10 M17x1
2003006	RL3 12 M20x1
2003007	RL3 14 M24x1

## RL4



Cod.	Ref.
2004A02	R4 3
2004A01	R4 3.17
2L04001	RL4 4
2004002	R4 5
2L04003	RL4 6
2L04004	RL4 8
2L04005	RL4 10
2004006	RL4 12
2004007	RL4 14

## RL5



Cod.	Ref.
2005A02	R5 3
2005A01	R5 3.17
2L05001	RL5 4
2005002	R5 5
2L05003	RL5 6
2L05004	RL5 8
2L05005	RL5 10
2005006	RL5 12
2005007	RL5 14

2L03301	RL3 6-4 M13x1
2L03302	RL3 8-4 M15x1
2L03303	RL3 8-6 M15x1
2L03304	RL3 10-6 M17x1
2L03305	RL3 10-8 M17x1
2L03306	RL3 6-12 M20x1
2L03307	RL3 8-12 M20x1
2L03308	RL3 10-12 M20x1

# RACCORDS INSTANTANES

## R6



Cod.	Ref.	Cod.	Ref.
2006A02	R6 3 M5	2006019	R6 12 1/4
2006A01	R6 3.17 M5	2006014	R6 12 3/8
2006001	R6 4 M5	2006015	R6 12 1/2
2006020	R6 4 M7	2006016	R6 14 3/8
2006002	R6 4 1/8	2006017	R6 14 1/2
2006003	R6 4 1/4	2006101	R6 6 M12X1.5
2006004	R6 5 M5	2006102	R6 8 M12X1.5
2006005	R6 5 1/8		
2006006	R6 5 1/4		
2006000	R6 6 M5		
2006021	R6 6 M7		
2006007	R6 6 1/8		
2006008	R6 6 1/4		
2006009	R6 8 1/8		
2006010	R6 8 1/4		
2006011	R6 8 3/8		
2006012	R6 10 1/4		
2006013	R6 10 3/8		
2006022	R6 10 1/2		

## R18



Cod.	Ref.
2018002	R18 4 1/8
2018007	R18 6 1/8
2018008	R18 6 1/4
2018009	R18 8 1/8
2018010	R18 8 1/4
2018011	R18 8 3/8
2018012	R18 10 1/4
2018013	R18 10 3/8

## R7



Cod.	Ref.
2007001	R7 4
2007002	R7 5
2007003	R7 6
2L07004	RL7 8
2007005	R7 10
2007006	R7 12
2007007	R7 14

## RL8



Cod.	Ref.	Cod.	Ref.
2008A01	R8 4 3	<b>MAJORATION</b>	
2008A02	R8 4 3.17	2009001	RL8/A 4 6
2008001	RL8 5 4		
2L08002	RL8 6 4		
2008003	R8 6 5		
2L08004	RL8 8 4		
2008005	R8 8 5		
2L08006	RL8 8 6		
2L08007	RL8 10 6		
2L08008	RL8 10 8		
2008009	RL8 12 4		
2008010	RL8 12 6		
2008011	RL8 12 8		
2008015	RL8 12 10		
2008014	RL8 14 8		
2008017	RL8 14 10		
2008018	RL8 14 12		

## RL9



Cod.	Ref.
2010A02	R9 3
2L10A01	RL9T 3.17
2L10001	RL9T 4
2010002	R9 5
2L10003	RL9T 6
2L10004	RL9T 8
2L10005	RL9T 10
2L10006	RL9T 12
2010007	R9 14

## RL10



Cod.	Ref.
2011A02	R10 3 M8x0.75
2011A01	R10 3.17 M8x0.75
2L11001	RL10 4 M11x1
2011002	R10 5 M14x1
2L11003	RL10 6 M13x1
2L11004	RL10 8 M15x1
2L11005	RL10 10 M17x1
2011006	RL10 12 M20x1
2011007	RL10 14 M24x1
2L11301	RL10 6-4 M13x1
2L11302	RL10 8-4 M15x1
2L11303	RL10 8-6 M15x1
2L11304	RL10 10-6 M17x1
2L11305	RL10 10-8 M17x1
2L11306	RL10 6-12 M20x1
2L11307	RL10 8-12 M20x1
2L11308	RL10 10-12 M20x1

# RACCORDI INSTANTANES

**METAL  
WORK**<sup>®</sup>  
PNEUMATIC

## RL13



Cod.	Ref.
2012A02	R13 3 M5
2012A01	R13 3.17 M5
2012001	RL13 4 M5
2012002	RL13 4 1/8
2012003	R13 5 M5
2012004	R13 5 1/8
2012005	RL13 6 1/8
2012006	RL13 6 1/4
2012007	RL13 8 1/8
2012008	RL13 8 1/4
2012009	RL13 8 3/8
2012010	RL13 10 1/4
2012011	RL13 10 3/8
2012013	RL13 12 1/4
2012012	RL13 12 3/8
2012014	RL13 12 1/2

## RL14



Cod.	Ref.
2013001	RL14 4 M5
2013002	RL14 4 1/8
2013003	R14 5 M5
2013004	R14 5 1/8
2013005	RL14 6 1/8
2013006	RL14 6 1/4
2013007	RL14 8 1/8
2013008	RL14 8 1/4
2013009	RL14 8 3/8
2013010	RL14 10 1/4
2013011	RL14 10 3/8
2013012	RL14 12 3/8
2013013	RL14 12 1/4
2013014	RL14 12 1/2

## RL15



Cod.	Ref.
2014101	R15 3 M3
2014102	R15 3.17 M3
2014103	R15 3 M5
2014104	R15 3.17 M5
2L14001	RL15 4 M5
2L14020	RL15 4 M7
2L14002	RL15 4 1/8
2014003	R15 5 M5
2014004	R15 5 1/8
2L14106	RL15 6 M5
2L14021	RL15 6 M7
2L14005	RL15 6 1/8
2L14007	RL15 6 1/4
2L14006	RL15 8 1/8
2L14008	RL15 8 1/4
2L14013	RL15 8 3/8
2L14009	RL15 10 1/4
2L14014	RL15 10 3/8
2014010	RL15 12 1/4

Cod.	Ref.
2014011	RL15 12 3/8
2014012	RL15 12 1/2

## RL16



Cod.	Ref.
2L15001	RL16 4 M5
2L15020	RL16 4 M7
2L15002	RL16 4 1/8
2015003	R16 5 M5
2015004	R16 5 1/8
2L15106	RL16 6 M5
2L15021	RL16 6 M7
2L15005	RL16 6 1/8
2L15007	RL16 6 1/4
2L15006	RL16 8 1/8
2L15008	RL16 8 1/4
2L15013	RL16 8 3/8
2L15009	RL16 10 1/4
2L15014	RL16 10 3/8
2015010	RL16 12 1/4
2015011	RL16 12 3/8
2015012	RL16 12 1/2

## RL31



Cod.	Ref.
2L31001	RL31 4 M5
2L31002	RL31 4 1/8
2L31003	RL31 4 1/4
2031004	R31 5 M5
2031005	R31 5 1/8
2031006	R31 5 1/4
2L31007	RL31 6 M5
2L31008	RL31 6 1/8
2L31009	RL31 6 1/4
2L31010	RL31 8 1/8
2L31011	RL31 8 1/4
2L31012	RL31 8 3/8
2L31013	RL31 10 1/4
2L31014	RL31 10 3/8
2031015	RL31 10 1/2
2031016	RL31 12 1/4
2031017	RL31 12 3/8
2031018	RL31 12 1/2
2031019	RL31 14 1/2

## RL31/C



Cod.	Ref.
2L31C02	RL31/C 4 1/8
2L31C03	RL31/C 4 1/4
2L31C08	RL31/C 6 1/8
2L31C09	RL31/C 6 1/4
2L31C10	RL31/C 8 1/8
2L31C11	RL31/C 8 1/4
2L31C12	RL31/C 8 3/8
2L31C13	RL31/C 10 1/4
2L31C14	RL31/C 10 3/8
2031C15	RL31/C 12 3/8
2031C16	RL31/C 12 1/2

CONIQUE

## RL32



Cod.	Ref.
2L32001	RL32 4 M5
2L32002	RL32 4 1/8
2L32003	RL32 4 1/4
2L32004	RL32 6 M5
2032005	RL32 5 1/8
2L32008	RL32 6 1/8
2L32009	RL32 6 1/4
2L32010	RL32 8 1/8
2L32011	RL32 8 1/4
2L32012	RL32 8 3/8
2L32013	RL32 10 1/4
2L32014	RL32 10 3/8
2032017	RL32 12 3/8
2032018	RL32 12 1/2
2032019	RL32 14 1/2

# RACCORDS INSTANTANES

## RL32/C



Cod.	Ref.
2L32C02	RL32/C 4 1/8
2L32C03	RL32/C 4 1/4
2L32C08	RL32/C 6 1/8
2L32C09	RL32/C 6 1/4
2L32C10	RL32/C 8 1/8
2L32C11	RL32/C 8 1/4
2L32C12	RL32/C 8 3/8
2L32C13	RL32/C 10 1/4
2L32C14	RL32/C 10 3/8

## RL38



Cod.	Ref.
2L38002	RL38 4 1/8
2L38008	RL38 6 1/8
2L38009	RL38 6 1/4
2L38010	RL38 8 1/8
2L38011	RL38 8 1/4
2L38013	RL38 10 1/4
2L38014	RL38 10 3/8
2038015	RL38 12 3/8
2038016	RL38 12 1/2

## RL39



Cod.	Ref.
2L39C02	RL39/C 4 1/8
2L39C08	RL39/C 6 1/8
2L39C09	RL39/C 6 1/4
2039Z07	RL39/Z 6 12x1 con.
2039Z08	RL39/Z 6 12x1.25 con.
2L39C10	RL39/C 8 1/8
2L39C11	RL39/C 8 1/4
2L39C13	RL39/C 10 1/4

## RL40



Cod.	Ref.
2L40003	RL40 6
2L40004	RL40 8

### CONIQUE FIXE

### CONIQUE

## RL50



Cod.	Ref.
2L50001	RL50 4 M5
2L50002	RL50 4 1/8
2033002	R33 5 1/8
2L50007	RL50 6 M5
2L50008	RL50 6 1/8
2L50009	RL50 6 1/4
2L50010	RL50 8 1/8
2L50011	RL50 8 1/4
2L50013	RL50 10 1/4

## RL51



Cod.	Ref.
2L51001	RL51 4 M5
2L51002	RL51 4 1/8
2L51007	RL51 6 M5
2L51008	RL51 6 1/8
2L51009	RL51 6 1/4
2L51010	RL51 8 1/8
2L51011	RL51 8 1/4
2L51013	RL51 10 1/4

## RL52



Cod.	Ref.
2L52002	RL52 4 1/8
2L52008	RL52 6 1/8
2L52009	RL52 6 1/4
2L52010	RL52 8 1/8
2L52011	RL52 8 1/4
2L52013	RL52 10 1/4

## RL53



Cod.	Ref.
2L53002	RL53 4 1/8
2L53008	RL53 6 1/8
2L53009	RL53 6 1/4
2L53010	RL53 8 1/8
2L53011	RL53 8 1/4
2L53013	RL53 10 1/4

# RACCORDI INSTANTANES

## RL54



Cod.	Ref.
2L54001	RL54 4 M5
2L54002	RL54 4 1/8
2L54007	RL54 6 M5
2L54008	RL54 6 1/8
2L54009	RL54 6 1/4
2L54010	RL54 8 1/8
2L54011	RL54 8 1/4
2L54012	RL54 8 3/8
2L54013	RL54 10 1/4
2L54014	RL54 10 3/8
2L54018	RL54 12 1/4
2L54016	RL54 12 3/8
2L54017	RL54 12 1/2

## RL55



Cod.	Ref.
2L55001	RL55 4 M5
2L55002	RL55 4 1/8
2L55007	RL55 6 M5
2L55008	RL55 6 1/8
2L55009	RL55 6 1/4
2L55010	RL55 8 1/8
2L55011	RL55 8 1/4
2L55012	RL55 8 3/8
2L55013	RL55 10 1/4
2L55014	RL55 10 3/8
2L55018	RL55 12 1/4
2L55016	RL55 12 3/8
2L55017	RL55 12 1/2

## RL56



Cod.	Ref.
2L56001	RL56 4 M5
2L56002	RL56 4 1/8
2L56007	RL56 6 M5
2L56008	RL56 6 1/8
2L56009	RL56 6 1/4
2L56010	RL56 8 1/8
2L56011	RL56 8 1/4
2L56012	RL56 8 3/8
2L56013	RL56 10 1/4
2L56014	RL56 10 3/8
2L56016	RL56 12 3/8
2L56017	RL56 12 1/2

## RL57



Cod.	Ref.
2L57001	RL57 4 M5
2L57002	RL57 4 1/8
2L57007	RL57 6 M5
2L57008	RL57 6 1/8
2L57009	RL57 6 1/4
2L57010	RL57 8 1/8
2L57011	RL57 8 1/4
2L57012	RL57 8 3/8
2L57013	RL57 10 1/4
2L57014	RL57 10 3/8
2L57016	RL57 12 3/8
2L57017	RL57 12 1/2

## RL19



Cod.	Ref.
2019001	RL19 4
2019002	RL19 5
2019003	RL19 6
2019004	RL19 8
2019005	RL19 10
2019006	RL19 12

## RL20



Cod.	Ref.
2020001	RL20 4 M5
2020002	RL20 4 1/8
2020003	RL20 5 M5
2020004	RL20 5 1/8
2020016	RL20 6 M5
2020005	RL20 6 1/8
2020007	RL20 6 1/4
2020006	RL20 8 1/8
2020008	RL20 8 1/4
2020009	RL20 10 1/4
2L20017	RL20 10 3/8
2020010	RL20 12 1/4
2020011	RL20 12 3/8
2020012	RL20 12 1/2

## R20/A



Cod.	Ref.
2020A01	R20/A 4 M5
2020A02	R20/A 4 1/8
2020A03	R20/A 5 M5
2020A04	R20/A 5 1/8
2020A05	R20/A 6 1/8
2020A07	R20/A 6 1/4
2020A06	R20/A 8 1/8
2020A08	R20/A 8 1/4
2020A09	R20/A 10 1/4
2020A10	R20/A 12 1/4
2020A11	R20/A 12 3/8
2020A12	R20/A 12 1/2

## RL21



Cod.	Ref.
2L21001	RL21 4
2021002	RL21 5
2L21003	RL21 6
2L21004	RL21 8
2021005	RL21 10
2021006	RL21 12

# RACCORDI INSTANTANES

## RL22



Cod.	Ref.
<b>2L22001</b>	RL22 4
<b>2L22002</b>	R22 5
<b>2L22003</b>	RL22 6
<b>2L22004</b>	RL22 8
<b>2L22005</b>	RL22 10
<b>2L22006</b>	RL22 12

## RL23



Cod.	Ref.
<b>2L23001</b>	RL23 4
<b>2L23002</b>	R23 5
<b>2L23003</b>	RL23 6
<b>2L23004</b>	RL23 8
<b>2L23005</b>	RL23 10
<b>2L23006</b>	RL23 12
<b>2L23301</b>	RL23 6 4
<b>2L23303</b>	RL23 8 6
<b>2L23306</b>	RL23 10 8
<b>2L23309</b>	RL23 12 10

## RL23/M



Cod.	Ref.
<b>2L23401</b>	RL23/M 4 M5
<b>2L23402</b>	RL23/M 4 1/8
<b>2L23403</b>	RL23/M 4 1/4
<b>2L23406</b>	RL23/M 6 1/8
<b>2L23407</b>	RL23/M 6 1/4
<b>2L23409</b>	RL23/M 8 1/8
<b>2L23410</b>	RL23/M 8 1/4
<b>2L23412</b>	RL23/M 8 3/8
<b>2L23413</b>	RL23/M 10 1/4
<b>2L23415</b>	RL23/M 10 3/8
<b>2L23419</b>	RL23/M 12 3/8
<b>2L23420</b>	RL23/M 12 1/2

## RL24



Cod.	Ref.
<b>2L24001</b>	RL24 4 4
<b>2L24003</b>	RL24 6 6
<b>2L24004</b>	RL24 8 8
<b>2L24005</b>	RL24 10 10
<b>2L24006</b>	RL24 12 12
<b>2L24301</b>	RL24 6 4
<b>2L24303</b>	RL24 8 6
<b>2L24306</b>	RL24 10 8
<b>2L24309</b>	RL24 12 10

## RL25



Cod.	Ref.
<b>2L25001</b>	RL25 4 M5
<b>2L25002</b>	RL25 4 M7
<b>2L25003</b>	RL25 4 1/8
<b>2L25004</b>	RL25 6 1/8
<b>2L25005</b>	RL25 6 1/4
<b>2L25008</b>	RL25 8 1/4
<b>2L25009</b>	RL25 8 3/8

## R28



Cod.	Ref.
<b>2L12102</b>	R28 4 1/8
<b>2L12104</b>	R28 5 1/8
<b>2L12106</b>	R28 6 1/8
<b>2L12107</b>	R28 6 1/4
<b>2L12108</b>	R28 8 1/8
<b>2L12109</b>	R28 8 1/4
<b>2L12110</b>	R28 8 3/8
<b>2L12111</b>	R28 10 1/4
<b>2L12112</b>	R28 10 3/8
<b>2L12113</b>	R28 12 1/4
<b>2L12114</b>	R28 12 3/8
<b>2L12115</b>	R28 12 1/2

## R29



Cod.	Ref.
<b>2L13102</b>	R29 4 1/8
<b>2L13104</b>	R29 5 1/8
<b>2L13106</b>	R29 6 1/8
<b>2L13107</b>	R29 6 1/4
<b>2L13108</b>	R29 8 1/8
<b>2L13109</b>	R29 8 1/4
<b>2L13110</b>	R29 8 3/8
<b>2L13111</b>	R29 10 1/4
<b>2L13112</b>	R29 10 3/8
<b>2L13113</b>	R29 12 1/4
<b>2L13114</b>	R29 12 3/8
<b>2L13115</b>	R29 12 1/2

## RL34



Cod.	Ref.
<b>2L34001</b>	RL34 4 M5
<b>2L34020</b>	RL34 4 M7
<b>2L34002</b>	RL34 4 1/8
<b>2L34003</b>	RL34 4 1/4
<b>2L34006</b>	RL34 6 M5
<b>2L34021</b>	RL34 6 M7
<b>2L34007</b>	RL34 6 1/8
<b>2L34008</b>	RL34 6 1/4
<b>2L34009</b>	RL34 8 1/8
<b>2L34010</b>	RL34 8 1/4
<b>2L34011</b>	RL34 8 3/8
<b>2L34013</b>	RL34 10 1/4
<b>2L34014</b>	RL34 10 3/8
<b>2L34016</b>	RL34 12 3/8
<b>2L34017</b>	RL34 12 1/2

# RACCORDS INSTANTANES

## RL34/F



Cod.	Ref.
2L34F01	RL34/F 4 M5
2L34F05	RL34/F 4 1/8
2L34F06	RL34/F 6 M5
2L34F07	RL34/F 6 1/8
2L34F08	RL34/F 6 1/4
2L34F09	RL34/F 8 1/8
2L34F10	RL34/F 8 1/4
2L34F13	RL34/F 10 1/4
2L34F14	RL34/F 10 3/8
2L34F16	RL34/F 12 3/8
2L34F17	RL34/F 12 1/2

## RL35



Cod.	Ref.
2L35001	RL35 4 M5
2L35020	RL35 4 M7
2L35002	RL35 4 1/8
2L35003	RL35 4 1/4
2L35006	RL35 6 M5
2L35007	RL35 6 1/8
2L35008	RL35 6 1/4
2L35009	RL35 8 1/8
2L35010	RL35 8 1/4
2L35011	RL35 8 3/8
2L35013	RL35 10 1/4
2L35014	RL35 10 3/8
2L35016	RL35 12 3/8
2L35017	RL35 12 1/2

## RL35/F



Cod.	Ref.
2L35F01	RL35/F 4 M5
2L35F06	RL35/F 6 M5
2L35F07	RL35/F 6 1/8
2L35F08	RL35/F 6 1/4
2L35F09	RL35/F 8 1/8
2L35F10	RL35/F 8 1/4
2L35F13	RL35/F 10 1/4
2L35F14	RL35/F 10 3/8
2L35F16	RL35/F 12 3/8
2L35F17	RL35/F 12 1/2

## RL36



Cod.	Ref.
2L36001	RL36 4 M5
2L36020	RL36 4 M7
2L36002	RL36 4 1/8
2L36006	RL36 6 M5
2L36021	RL36 6 M7
2L36007	RL36 6 1/8
2L36008	RL36 6 1/4
2L36009	RL36 8 1/8
2L36010	RL36 8 1/4
2L36012	RL36 10 1/4

## RL37



Cod.	Ref.
2L37001	RL37 4 M5
2L37020	RL37 4 M7
2L37002	RL37 4 1/8
2L37006	RL37 6 M5
2L37007	RL37 6 1/8
2L37008	RL37 6 1/4
2L37009	RL37 8 1/8
2L37010	RL37 8 1/4
2L37012	RL37 10 1/4

## RL42



Cod.	Ref.
2L42001	RL42 4 4
2L42002	RL42 4 6
2L42004	RL42 6 6
2L42005	RL42 6 8

## RL43



Cod.	Ref.
2L43001	RL43 4 M5
2L43002	RL43 4 1/8
2L43003	RL43 4 1/4
2L43008	RL43 6 1/8
2L43009	RL43 6 1/4

## RL44



Cod.	Ref.
2L44001	RL44 6 4
2L44003	RL44 8 6

# RACCORDS INSTANTANES



Cod.	Ref.
2L45001	RL45 1/8 6 4
2L45002	RL45 1/4 6 4
2L45007	RL45 1/8 8 6
2L45008	RL45 1/4 8 6
2L45009	RL45 3/8 8 6



Cod.	Ref.
2L46001	RL46 4 4
2L46002	RL46 6 6
2L46003	RL46 8 8
2L46004	RL46 10 10



Cod.	Ref.
2L47001	RL47 4 4
2L47002	RL47 6 6
2L47003	RL47 8 8



Cod.	Ref.
2L48001	RL48 4 4
2L48002	RL48 6 6
2L48003	RL48 8 8
2L48004	RL48 10 10



Cod.	Ref.
2L49001	RL49 4
2L49003	RL49 6
2L49004	RL49 8
2L49005	RL49 10
2L49006	RL49 12



Cod.	Ref.
2026A02	R26 3
2026A01	R26 3.17
2026001	R26 4
2026002	R26 5
2026003	R26 6
2026004	R26 8
2026005	R26 10
2026006	R26 12



Cod.	Ref.
2027001	R27 4
2027002	R27 5
2027003	R27 6
2027004	R27 8
2027005	R27 10
2027006	R27 12



Cod.	Ref.
2017001	RL17 3 10
2017001	R17 4 14

**R1 NSF**



Cod.	Ref.
2F01000	R1NSF 6 M5
2F01001	R1NSF 4 M5
2F01002	R1NSF 4 1/8
2F01003	R1NSF 4 1/4
2F01007	R1NSF 6 1/8
2F01008	R1NSF 6 1/4
2F01009	R1NSF 8 1/8
2F01010	R1NSF 8 1/4
2F01011	R1NSF 8 3/8
2F01012	R1NSF 10 1/4
2F01013	R1NSF 10 3/8
2F01022	R1NSF 10 1/2

**R1C NSF**



Cod.	Ref.
2F01C02	R1CNSF 4 1/8
2F01C07	R1CNSF 6 1/8
2F01C08	R1CNSF 6 1/4
2F01C09	R1CNSF 8 1/8
2F01C10	R1CNSF 8 1/4
2F01C11	R1CNSF 8 3/8
2F01C13	R1CNSF 10 1/4
2F01C14	R1CNSF 10 3/8

**R2 NSF**



Cod.	Ref.
2F02001	R2NSF 4 1/8
2F02005	R2NSF 6 1/8
2F02006	R2NSF 6 1/4
2F02007	R2NSF 8 1/8
2F02008	R2NSF 8 1/4
2F02011	R2NSF 10 1/4

**R3 NSF**



Cod.	Ref.
2F03001	R3NSF 4
2F03003	R3NSF 6
2F03004	R3NSF 8
2F03005	R3NSF 10

**CONIQUE**

**R4 NSF**



Cod.	Ref.
2F04001	R4NSF 4
2F04003	R4NSF 6
2F04004	R4NSF 8
2F04005	R4NSF 10

**R5 NSF**



Cod.	Ref.
2F05001	R5NSF 4
2F05003	R5NSF 6
2F05004	R5NSF 8
2F05005	R5NSF 10

**R6 NSF**



Cod.	Ref.
2F06000	R6NSF 6 M5
2F06001	R6NSF 4 M5
2F06002	R6NSF 4 1/8
2F06003	R6NSF 4 1/4
2F06007	R6NSF 6 1/8
2F06008	R6NSF 6 1/4
2F06009	R6NSF 8 1/8
2F06010	R6NSF 8 1/4
2F06011	R6NSF 8 3/8
2F06012	R6NSF 10 1/4
2F06013	R6NSF 10 3/8

**R10 NSF**



Cod.	Ref.
2F11001	R10NSF 4
2F11003	R10NSF 6
2F11004	R10NSF 8
2F11005	R10NSF 10

### R31 NSF



Cod.	Ref.
2F31001	R31NSF 4 M5
2F31002	R31NSF 4 1/8
2F31003	R31NSF 4 1/4
2F31007	R31NSF 6 M5
2F31008	R31NSF 6 1/8
2F31009	R31NSF 6 1/4
2F31010	R31NSF 8 1/8
2F31011	R31NSF 8 1/4
2F31012	R31NSF 8 3/8
2F31013	R31NSF 10 1/4
2F31014	R31NSF 10 3/8
2F31015	R31NSF 10 1/2

### R31C NSF



Cod.	Ref.
2F31C02	R31CNSF 4 1/8
2F31C03	R31CNSF 4 1/4
2F31C08	R31CNSF 6 1/8
2F31C09	R31CNSF 6 1/4
2F31C10	R31CNSF 8 1/8
2F31C11	R31CNSF 8 1/4
2F31C12	R31CNSF 8 3/8
2F31C13	R31CNSF 10 1/4
2F31C14	R31CNSF 10 3/8

CONIQUE

### R32 NSF



Cod.	Ref.
2F32002	R32NSF 4 1/8
2F32008	R32NSF 6 1/8
2F32009	R32NSF 6 1/4
2F32010	R32NSF 8 1/8
2F32011	R32NSF 8 1/4
2F32012	R32NSF 8 3/8
2F32013	R32NSF 10 1/4
2F32014	R32NSF 10 3/8

### R38 NSF



Cod.	Ref.
2F38002	R38NSF 4 1/8
2F38008	R38NSF 6 1/8
2F38009	R38NSF 6 1/4
2F38010	R38NSF 8 1/8
2F38011	R38NSF 8 1/4
2F38013	R38NSF 10 1/4
2F38014	R38NSF 10 3/8

### R39C NSF



Cod.	Ref.
2F39C02	R39CNSF 4 1/8
2F39C08	R39CNSF 6 1/8
2F39C09	R39CNSF 6 1/4
2F39C10	R39CNSF 8 1/8
2F39C11	R39CNSF 8 1/4
2F39C12	R39CNSF 8 3/8
2F39C13	R39CNSF 10 1/4

CONIQUE FIXE

# A

## A1



Cod.	Ref.
2101A00	A1 M5 M5
2101000	A1 M5 1/8
2101001	A1 1/8 1/8
2101002	A1 1/8 1/4
2101003	A1 1/8 3/8
2101004	A1 1/4 1/4
2101005	A1 1/4 3/8
2101006	A1 1/4 1/2
2101007	A1 3/8 3/8

CYLINDRIQUE

## A2



Cod.	Ref.
2102001	A2 1/8 1/8
2102002	A2 1/8 1/4
2102003	A2 1/8 3/8
2102004	A2 1/4 1/4
2102005	A2 1/4 3/8
2102006	A2 1/4 1/2
2102007	A2 3/8 3/8
2102008	A2 3/8 1/2
2102009	A2 1/2 1/2
2102010	A2 1/2 3/4
2102011	A2 3/4 3/4
2102013	A2 3/4 1
2102014	A2 1 1
2102015	A2 1 1 1/4
2102016	A2 1 1/4 1 1/4
2102017	A2 1 1/4 1 1/2
2102018	A2 1 1/2 1 1/2

## A3



Cod.	Ref.
2103000	A3 M5
2103001	A3 1/8
2103002	A3 1/4
2103003	A3 3/8
2103004	A3 1/2
2103005	A3 3/4
2103006	A3 1

## A4



Cod.	Ref.
2104001	A4 1/4 1/8
2104002	A4 3/8 1/8
2104003	A4 3/8 1/4
2104004	A4 1/2 1/4
2104005	A4 1/2 3/8
2104006	A4 3/4 1/2
2104007	A4 1 3/4
2104008	A4 1 1/2
2104010	A4 1 1/4 1
2104012	A4 1 1/2 1
2104014	A4 1 1/2 1 1/4
2104016	A4 2 1 1/2

## A4/Z



Cod.	Ref.
2151000	A4/Z 1/8 M5
2151001	A4/Z 1/4 1/8
2151002	A4/Z 3/8 1/8
2151003	A4/Z 3/8 1/4
2151004	A4/Z 1/2 1/4
2151005	A4/Z 1/2 3/8

CYLINDRIQUE

## A5



Cod.	Ref.
2105001	A5 1/8 1/8
2105002	A5 1/8 1/4
2105003	A5 1/4 1/4
2105004	A5 1/4 3/8
2105005	A5 3/8 3/8
2105006	A5 3/8 1/2
2105007	A5 1/2 1/2

## A5/Z



Cod.	Ref.
2152001	A5/Z M5 1/8
2152002	A5/Z 1/8 1/8
2152003	A5/Z 1/8 1/4
2152004	A5/Z 1/4 1/4
2152005	A5/Z 1/4 3/8
2152006	A5/Z 3/8 3/8
2152007	A5/Z 3/8 1/2
2152008	A5/Z 1/2 1/2

CYLINDRIQUE

## A6



Cod.	Ref.
2106001	A6 1/8 1/4
2106002	A6 1/8 3/8
2106003	A6 1/4 3/8
2106004	A6 1/4 1/2
2106005	A6 3/8 1/2
2106006	A6 3/4 1/2

## A7



Cod.	Ref.
2107000	A7 M5
2107001	A7 1/8
2107002	A7 1/4
2107003	A7 3/8
2107004	A7 1/2
2107005	A7 M7

CYLINDRIQUE

## A8



Cod.	Ref.
2108001	A8 1/8
2108002	A8 1/4
2108003	A8 3/8
2108004	A8 1/2

## A9



Cod.	Ref.
2109001	A9 1/8
2109002	A9 1/4
2109003	A9 3/8
2109004	A9 1/2
2109005	A9 3/4 3/4
2109006	A9 1 1

## A10



Cod.	Ref.
2110001	A10 1/8 1/8
2110002	A10 1/4 1/4
2110003	A10 3/8 3/8
2110004	A10 1/2 1/2
2110005	A10 3/4
2110006	A10 1

## A11



Cod.	Ref.
2111001	A11 1/8
2111002	A11 1/4
2111003	A11 3/8
2111004	A11 1/2
2111005	A11 3/4
2111006	A11 1

## A12



Cod.	Ref.
2112001	A12 1/8 1/8
2112002	A12 1/4 1/4
2112003	A12 3/8 3/8
2112004	A12 1/2 1/2
2112005	A12 3/4 3/4

## A13



Cod.	Ref.
2113001	A13 1/8 1/8
2113002	A13 1/4 1/4
2113003	A13 3/8 3/8
2113004	A13 1/2 1/2

## A14



Cod.	Ref.
2114001	A14 1/8
2114002	A14 1/4
2114003	A14 3/8

## A15



Cod.	Ref.
2115001	A15 1/8
2115002	A15 1/4
2115003	A15 3/8
2115004	A15 1/2

## A16



Cod.	Ref.
2116001	A16 1/8
2116002	A16 1/4
2116003	A16 3/8
2116004	A16 1/2

## A17



Cod.	Ref.
2117001	A17 1/4 1/4
2117002	A17 1/8 1/8
2117003	A17 3/8 3/8
2117004	A17 1/2 1/2

## A18



Cod.	Ref.
2118000	A18 1/8 1/8
2118001	A18 1/4 1/4
2118002	A18 3/8 3/8
2118003	A18 1/2 1/2

## BOUCHON CONIQUE



Cod.	Ref.
2189001	BOUCHON 1/8
2189002	BOUCHON 1/4
2189003	BOUCHON 3/8
2189004	BOUCHON 1/2

# A

## A19



Cod.	Ref.
2119001	A19 Ø7 1/8
2119002	A19 Ø7 1/4
2119003	A19 Ø8 1/8
2119004	A19 Ø9 1/8
2119005	A19 Ø9 1/4
2119006	A19 Ø9 3/8
2119007	A19 Ø12 1/4
2119008	A19 Ø12 3/8
2119009	A19 Ø12 1/2

Cod.	Ref.
2119010	A19 Ø17 3/8
2119011	A19 Ø17 1/2

### CYLINDRIQUE

## A20



Cod.	Ref.
2120001	A20 1/8 1/8
2120002	A20 1/4 1/4

## A21



Cod.	Ref.
2121001	A21 1/8
2121002	A21 1/4
2121003	A21 3/8
2121004	A21 1/2

## A23



Cod.	Ref.
2123001	A23 1/8
2123002	A23 1/4
2123003	A23 3/8
2123004	A23 1/2

## A24



Cod.	Ref.
2124001	A24 1/8 1/8
2124002	A24 1/4 1/4
2124003	A24 3/8 3/8
2124004	A24 1/2 1/2

## A25



Cod.	Ref.
2150003	A25 1/8
2150004	A25 1/8
2150005	A25 1/8
2150006	A25 1/4
2150007	A25 1/4

## A90



Cod.	Ref.
E230L001	A90 1/8
E230L002	A90 1/4
E230L003	A90 3/8
E230L004	A90 1/2

## A19 CONIQUE



Cod.	Ref.
A1961/8CO	A19 6 1/8 CO.
A1961/4CO	A19 6 1/4 CO.
A1971/8CO	A19 7 1/8 CO.
A1971/4CO	A19 7 1/4 CO.
A1981/8CO	A19 8 1/8 CO.
A1981/4CO	A19 8 1/4 CO.
A1991/8CO	A19 9 1/8 CO.
A1991/4CO	A19 9 1/4 CO.
A1993/8CO	A19 9 3/8 CO.

Cod.	Ref.
A1991/2CO	A19 9 1/2 CO.
A19101/8CO	A19 10 1/8 CO.
A19101/4CO	A19 10 1/4 CO.
A19103/8CO	A19 10 3/8 CO.
A19101/2CO	A19 10 1/2 CO.
A19121/4CO	A19 12 1/4 CO.
A19123/8CO	A19 12 3/8 CO.
A19121/2CO	A19 12 1/2 CO.
A19141/4CO	A19 14 1/4 CO.

Cod.	Ref.
A19143/8CO	A19 14 3/8 CO.
A19141/2CO	A19 14 1/2 CO.
A19163/8CO	A19 16 3/8 CO.
A19161/2CO	A19 16 1/2 CO.
A19163/4CO	A19 16 3/4 CO.
A19173/8CO	A19 17 3/8 CO.
A19171/2CO	A19 17 1/2 CO.
A19183/8CO	A19 18 3/8 CO.
A19181/2CO	A19 18 1/2 CO.

Cod.	Ref.
A19183/4CO	A19 18 3/4 CO.
A19203/8CO	A19 20 3/8 CO.
A19201/2CO	A19 20 1/2 CO.
A19203/4CO	A19 20 3/4 CO.
A19253/4CO	A19 25 3/4 CO.
A19251CO	A19 25 1 CO.



# B

## B1



Cod.	Ref.
2201001	B1 4/2 1/8
2201002	B1 6/4 1/8
2201003	B1 6/4 1/4
2201004	B1 8/6 1/8
2201005	B1 8/6 1/4
2201006	B1 8/6 3/8
2201007	B1 10/8 1/4
2201008	B1 10/8 3/8
2201009	B1 10/8 1/2

## B2



Cod.	Ref.
2202001	B2 6/4 1/8
2202002	B2 6/4 1/4
2202003	B2 8/6 1/8
2202004	B2 8/6 1/4
2202005	B2 8/6 3/8
2202006	B2 10/8 1/4
2202007	B2 10/8 3/8

## B3



Cod.	Ref.
2203001	B3 4/2
2203002	B3 6/4
2203003	B3 8/6
2203004	B3 10/8
2203005	B3 12/10
2203006	B3 15/12

## B4



Cod.	Ref.
2204001	B4 6/4
2204002	B4 8/6
2204003	B4 10/8
2204004	B4 12/10
2204005	B4 15/12

## B5



Cod.	Ref.
2205001	B5 4/2 1/8
2205002	B5 6/4 1/8
2205003	B5 6/4 1/4
2205004	B5 8/6 1/8
2205005	B5 8/6 1/4
2205006	B5 8/6 3/8
2205007	B5 10/8 1/4
2205008	B5 10/8 3/8
2205009	B5 10/8 1/2

## B6



Cod.	Ref.
2206001	B6 4/2
2206002	B6 6/4
2206003	B6 8/6
2206004	B6 10/8
2206005	B6 12/10
2006006	B6 15/12

## B7



Cod.	Ref.
2207001	B7 4/2 1/8
2207002	B7 6/4 1/8
2207003	B7 6/4 1/4
2207004	B7 8/6 1/8
2207005	B7 8/6 1/4
2207006	B7 8/6 3/8
2207007	B7 10/8 1/4
2207008	B7 10/8 3/8
2207010	B7 12/10 3/8

## B8



Cod.	Ref.
2208000	B8 4/2 1/8
2208001	B8 6/4 1/8
2208002	B8 6/4 1/4
2208003	B8 8/6 1/8
2208004	B8 8/6 1/4
2208005	B8 8/6 3/8
2208006	B8 10/8 1/4
2208007	B8 10/8 3/8
2208009	B8 12/10 3/8

Cod.	Ref.
2208010	B8 12/10 1/2
2208011	B8 15/12 1/2

### B9



Cod.	Ref.
2209001	B9 4/2
2209002	B9 6/4
2209003	B9 8/6
2209004	B9 10/8
2209005	B9 12/10
2209006	B9 15/12

### B10



Cod.	Ref.
2210001	B10 4/2
2210002	B10 6/4
2210003	B10 8/6
2210004	B10 10/8
2210005	B10 12/10
2210006	B10 15/12

### B11



Cod.	Ref.
2211001	B11 4/2
2211002	B11 6/4
2211003	B11 8/6
2211004	B11 10/8
2211005	B11 12/10
2211006	B11 15/12

### B12



Cod.	Ref.
2212001	B12 6/4
2212002	B12 8/6
2212003	B12 10/8
2212004	B12 12/10
2212005	B12 15/12

C

C1



Cod.	Ref.
2301017	C1 5/3 1/8
2301001	C1 6/4 1/8
2301002	C1 6/4 1/4
2301003	C1 8/6 1/8
2301004	C1 8/6 1/4
2301005	C1 8/6 3/8
2301019	C1 8/6 1/2
2301020	C1 10/8 1/8
2301006	C1 10/8 1/4

Cod.	Ref.
2301007	C1 10/8 3/8
2301008	C1 10/8 1/2
2301009	C1 12/10 3/8
2301010	C1 12/10 1/2
2301015	C1 15/12.5 1/2

C1/Z



Cod.	Ref.
2351001	C1/Z 4/2 M5
2351002	C1/Z 6/4 M5
2351003	C1/Z 6/4 1/8
2351004	C1/Z 6/4 1/4
2351005	C1/Z 8/6 1/8
2351006	C1/Z 8/6 1/4
2351007	C1/Z 8/6 3/8
2351008	C1/Z 10/8 1/4
2351009	C1/Z 10/8 3/8

Cod.	Ref.
2351010	C1/Z 10/8 1/2
2351011	C1/Z 12/10 3/8
2351012	C1/Z 12/10 1/2

CYLINDRIQUE

C1/C



Cod.	Ref.
2356001	C1/C 5/3 M5
2356002	C1/C 6/4 M6
2356003	C1/C 6/4 M12x1.5
2356004	C1/C 6/4 3/8
2356005	C1/C 8/6 M12x1.5

C2



Cod.	Ref.
2302001	C2 6/4 1/8
2302002	C2 6/4 1/4
2302003	C2 8/6 1/8
2302004	C2 8/6 1/4
2302005	C2 8/6 3/8
2302006	C2 10/8 1/4
2302007	C2 10/8 3/8
2302008	C2 10/8 1/2

C3



Cod.	Ref.
2303001	C3 6/4
2303002	C3 8/6
2303003	C3 10/8
2303004	C3 12/10

C4



Cod.	Ref.
2304001	C4 6/4
2304002	C4 8/6
2304003	C4 10/8
2304004	C4 12/10

C5



Cod.	Ref.
2305016	C5 5/3 1/8
2305001	C5 6/4 1/8
2305002	C5 6/4 1/4
2305003	C5 8/6 1/8
2305004	C5 8/6 1/4
2305005	C5 8/6 3/8
2305006	C5 10/8 1/4
2305007	C5 10/8 3/8
2305008	C5 10/8 1/2

Cod.	Ref.
2305009	C5 12/10 3/8
2305010	C5 12/10 1/2
2305017	C5 15/12.5 1/2

C5/F



Cod.	Ref.
2352001	C5/F 6/4 1/8
2352002	C5/F 8/6 1/4

C5/C



Cod.	Ref.
2357001	C5/C 6/4 M12x1.5
2357002	C5/C 8/6 M12x1.5

# C

## C6



Cod.	Ref.						
2306001	C6	6/4					
2306002	C6	8/6					
2306003	C6	10/8					
2306004	C6	12/10					
2306006	C6	15/12.5					

## C7



Cod.	Ref.								
2307015	C7	5/3	1/8			2307009	C7	12/10	3/8
2307001	C7	6/4	1/8			2307010	C7	12/10	1/2
2307002	C7	6/4	1/4			2307016	C7	15/12.5	1/2
2307003	C7	8/6	1/8						
2307004	C7	8/6	1/4						
2307005	C7	8/6	3/8						
2307006	C7	10/8	1/4						
2307007	C7	10/8	3/8						
2307008	C7	10/8	1/2						

## C8



Cod.	Ref.			Cod.	Ref.				
2308012	C8	5/3	1/8	2308009	C8	12/10	3/8		
2308001	C8	6/4	1/8	2308010	C8	12/10	1/2		
2308002	C8	6/4	1/4						
2308003	C8	8/6	1/8						
2308004	C8	8/6	1/4						
2308005	C8	8/6	3/8						
2308006	C8	10/8	1/4						
2308007	C8	10/8	3/8						
2308008	C8	10/8	1/2						

## C9



Cod.	Ref.						
2309001	C9	6/4					
2309002	C9	8/6					
2309003	C9	10/8					
2309004	C9	12/10					
2309007	C9	15/12.5					

## C10



Cod.	Ref.						
2310001	C10	4/2	M7x0.5				
2310009	C10	5/3	M7x0.5				
2310002	C10	6/4- M5	M8x0.5				
2310003	C10	6/4	M10x1				
2310004	C10	8/6	M12x1				
2310005	C10	10/8	M14x1				
2310006	C10	12/10	M16x1				
2310011	C10	15/12.5	M20x1				

## C11



Cod.	Ref.						
2311001	C11	6/4					
2311002	C11	8/6					
2311003	C11	10/8					

# D

## D5



Cod.	Ref.
2405000	D5 4/2 M5
2405013	D5 5/3 1/8
2405018	D5 5/3 M5
2405001	D5 6/4 M5
2405002	D5 6/4 1/8
2405003	D5 6/4 1/4
2405005	D5 8/6 1/8
2405006	D5 8/6 1/4
2405007	D5 8/6 3/8

Cod.	Ref.
2405009	D5 10/8 1/4
2405010	D5 10/8 3/8
2405011	D5 10/8 1/2
2405012	D5 12/10 1/2
2405017	D5 12/10 3/8

## D6



Cod.	Ref.
2406001	D6 6/4 1/8
2406002	D6 6/4 1/4
2406004	D6 8/6 1/8
2406005	D6 8/6 1/4
2406006	D6 8/6 3/8
2406008	D6 10/8 1/4
2406009	D6 10/8 3/8
2406010	D6 10/8 1/2
2406011	D6 12/10 1/2

## D7



Cod.	Ref.
<b>AVEC RONDELLES*</b>	
2407001	D7+Rond. M5
2407002	D7+Rond. 1/8
2407003	D7+Rond. 1/4
2407004	D7+Rond. 3/8
2407005	D7+Rond. 1/2
2407006	D7+Rond. M12x1.5
<b>AVEC O-RING*</b>	
2407102	D7 +OR 1/8

Cod.	Ref.
2407103	D7 +OR 1/4
2407104	D7 +OR 3/8

## D8



Cod.	Ref.
<b>AVEC RONDELLES*</b>	
2408001	D8+Rond. 1/8
2408002	D8+Rond. 1/4
2408003	D8+Rond. 3/8
2408004	D8+Rond. 1/2
<b>AVEC O-RING*</b>	
2408102	D8 +OR 1/8
2408103	D8 +OR 1/4
2408104	D8 +OR 3/8

## D9



Cod.	Ref.
<b>AVEC RONDELLES*</b>	
2409001	D9+Rond. 1/8 1/8
2409002	D9+Rond. 1/4 1/4
2409003	D9+Rond. 3/8 3/8
2409004	D9+Rond. 1/2 1/2
<b>AVEC O-RING*</b>	
2409102	D9 +OR 1/8 1/8
2409103	D9 +OR 1/4 1/4
2409104	D9 +OR 3/8 3/8

## D10



Cod.	Ref.
<b>AVEC RONDELLES*</b>	
2410001	D10+Rond. 1/8 1/8
2410002	D10+Rond. 1/4 1/4
2410003	D10+Rond. 3/8 3/8
2410004	D10+Rond. 1/2 1/2
<b>AVEC O-RING*</b>	
2410102	D10 +OR 1/8 1/8
2410103	D10 +OR 1/4 1/4
2410104	D10 +OR 3/8 3/8

## D11



Cod.	Ref.
2411001	D18 M5 (NYLON)
2411002	D11 1/8
2411003	D11 1/4
2411004	D11 3/8
2411005	D11 1/2

## D12



Cod.	Ref.
2412001	D12 1/8
2412002	D12 1/4
2412003	D12 3/8

## D17



Cod.	Ref.
2417006	D17 4/2 1/8
2417002	D17 6/4 1/8
2417003	D17 6/4 1/4
2417004	D17 8/6 1/8
2417005	D17 8/6 1/4

\* Rondelles pour corps laiton  
O-Ring pour corps technopolimère



Cod.	Ref.		
0101001	01	mini	1/8
0101002	02	mini	1/4
0201101	101	100	1/4
0301201	201	200	3/8
0300202	201/A	200	1/4
0401301	301	300	1/2



Cod.	Ref.		
0101003	03	mini	1/8
0101004	04	mini	1/4
0201102	102	100	1/4
0301202	202	200	3/8
0401302	302	300	1/2



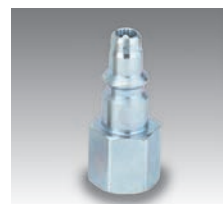
Cod.	Ref.		
0101005	05	mini	6/4
0101006	06	mini	8/6



Cod.	Ref.		
0101007	07	mini	6/4
0101008	08	mini	8/6



Cod.	Ref.		
0102011	11	mini	1/8
0102012	12	mini	1/4
0202111	111	100	1/4
0302211	211	200	3/8
0303205	211/A	200	1/4
0402311	311	300	1/2



Cod.	Ref.		
0102013	13	mini	1/8
0102014	14	mini	1/4
0202112	112	100	1/4
0302212	212	200	3/8
0402312	312	300	1/2



Cod.	Ref.		
0102015	15	mini	6/4
0102016	16	mini	8/6



Cod.	Ref.		
0102017	17	mini	6/4
0102018	18	mini	8/6



Cod.	Ref.		
0010001	C1/Z	1/4	8
0010002	C1/Z	3/8	8
0010003	C1/Z	1/4	10
0010004	C1/Z	3/8	10
0010005	C1/Z	3/8	12



Cod.	Ref.		
2601001	40	1/4	6x14
2601002	41	1/4	8x17
2601003	42	1/4	10x19
2601004	43	1/2	13x23



Cod.	Ref.		
2501010	50	1/4	6/4
2501011	51	1/4	8/6
2501012	52	3/8	10/8
2501013	53	3/8	12/10



**U**



Cod.	Ref.
9041301	RFL R U 4-4
9041316	RFL R U 6-6
9041324	RFL R U 8-8

**C**



Cod.	Ref.
9041401	RFL R U M5-4
9041402	RFL R U 1/8-4
9041408	RLF R U 1/8-6
9041409	RFL R U 1/4-6
9041410	RFL R U 1/8-8
9041411	RFL R U 1/4-8
9041412	RFL R U 3/8-8

Pour vérin

**V**



Cod.	Ref.
9041501	RFL R U 4-M5
9041502	RFL R U 4-1/8
9041508	RFL R U 6-1/8
9041509	RFL R U 6-1/4
9041510	RFL R U 8-1/8
9041511	RFL R U 8-1/4
9041512	RFL R U 8-3/8

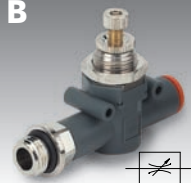
Pour distributeur

**B**



Cod.	Ref.
9041601	RFL R B 4-4
9041616	RFL R B 6-6
9041624	RFL R B 8-8

**B**



Cod.	Ref.
9041701	RFL R B M5-4
9041702	RFL R B 1/8-4
9041708	RFL R B 1/8-6
9041709	RFL R B 1/4-6
9041710	RFL R B 1/8-8
9041711	RFL R B 1/4-8
9041712	RFL R B 3/8-8

## VNR-L Clapets anti-retour



Cod.	Ref.
9064016	VNR L 6-6
9064024	VNR L 8-8



Cod.	Ref.
9064108	VNR L 1/8-6
9064109	VNR L 1/4-6
9064110	VNR L 1/8-8
9064111	VNR L 1/4-8
9064112	VNR L 3/8-8



Cod.	Ref.
9064208	VNR L 6-1/8
9064209	VNR L 6-1/4
9064210	VNR L 8-1/8
9064211	VNR L 8-1/4
9064212	VNR L 8-3/8



Cod. Ref.  
**9061316** RML 6-6  
**9061324** RML 8-8



Cod. Ref.  
**9061408** RML 1/8-6  
**9061409** RML 1/4-6  
**9061410** RML 1/8-8  
**9061411** RML 1/4-8  
**9061412** RML 3/8-8



Cod. Ref.  
**9061508** RML 6-1/8  
**9061509** RML 6-1/4  
**9061510** RML 8-1/8  
**9061511** RML 8-1/4  
**9061512** RML 8-3/8



Cod. Ref.  
**9061102** RMC 1/8-4  
**9061108** RMC 1/8-6  
**9061110** RMC 1/8-8  
**9061109** RMC 1/4-6  
**9061111** RMC 1/4-8  
**9061112** RMC 1/4-10



Cod. Ref.  
**9061001** RMS 1/8  
**9061002** RMS 1/4

## MAN-L Manomètres



Cod. Ref.  
**9067016** MAN L 6-6  
**9067024** MAN L 8-8



Cod. Ref.  
**9067108** MAN L 1/8-6  
**9067109** MAN L 1/4-6  
**9067110** MAN L 1/8-8  
**9067111** MAN L 1/4-8  
**9067112** MAN L 3/8-8



Cod.	Ref.
9065016	V2V L 6-6
9066016	V3V L 6-6
9065024	V2V L 8-8
9066024	V3V L 8-8



Cod.	Ref.
9065116	V2V L 6-6 CAD.
9066116	V3V L 6-6 CAD.
9065124	V2V L 8-8 CAD.
9066124	V3V L 8-8 CAD.



Cod.	Ref.
9065208	V2V L 6-1/8
9066208	V3V L 6-1/8
9065209	V2V L 6-1/4
9066209	V3V L 6-1/4
9065210	V2V L 8-1/8
9066210	V3V L 8-1/8
9065211	V2V L 8-1/4
9066211	V3V L 8-1/4
9065212	V2V L 8-3/8
9066212	V3V L 8-3/8



Cod.	Ref.
9065308	V2V L 6-1/8 CAD.
9066308	V3V L 6-1/8 CAD.
9065309	V2V L 6-1/4 CAD.
9066309	V3V L 6-1/4 CAD.
9065310	V2V L 8-1/8 CAD.
9066310	V3V L 8-1/8 CAD.
9065311	V2V L 8-1/4 CAD.
9066311	V3V L 8-1/4 CAD.
9065312	V2V L 8-3/8 CAD.
9066312	V3V L 8-3/8 CAD.



Cod.	Ref.
9065408	V2V L 1/8-6
9066408	V3V L 1/8-6
9065409	V2V L 1/4-6
9066409	V3V L 1/4-6
9065410	V2V L 1/8-8



Cod.	Ref.
9066410	V3V L 1/8-8
9065411	V2V L 1/4-8
9066411	V3V L 1/4-8
9065412	V2V L 3/8-8
9066412	V3V L 3/8-8

Cod.	Ref.
9065508	V2V L 1/8-6 CAD.
9066508	V3V L 1/8-6 CAD.
9065509	V2V L 1/4-6 CAD.
9066509	V3V L 1/4-6 CAD.
9065510	V2V L 1/8-8 CAD.

Cod.	Ref.
9066510	V3V L 1/8-8 CAD.
9065511	V2V L 1/4-8 CAD.
9066511	V3V L 1/4-8 CAD.
9065512	V2V L 3/8-8 CAD.
9066512	V3V L 3/8-8 CAD.

## VSR-L Valves d'échappement rapide



Cod.	Ref.
9063016	VSR L 6-6-6
9063024	VSR L 8-8-8



Cod.	Ref.
9063116	VSR L 6-6-SIL
9063124	VSR L 8-8-SIL



Cod.	Ref.
9063208	VSR L 6-1/8-6
9063209	VSR L 6-1/4-6
9063210	VSR L 8-1/8-8
9063211	VSR L 8-1/4-8
9063212	VSR L 8-3/8-8



Cod.	Ref.
9063308	VSR L 6-1/8-SIL
9063309	VSR L 6-1/4-SIL
9063310	VSR L 8-1/8-SIL
9063311	VSR L 8-1/4-SIL
9063312	VSR L 8-3/8-SIL



Cod.	Ref.
9068016	LAM L 6-6-A
9068216	LAM L 6-6-V
9068024	LAM L 8-8-A
9068224	LAM L 8-8-V
A = ORANGE	
V = VERT	



Cod.	Ref.	Cod.	Ref.
9068108	LAM L 1/8-6-A	9068310	LAM L 1/8-8-V
9068308	LAM L 1/8-6-V	9068111	LAM L 1/4-8-A
9068109	LAM L 1/4-6-A	9068311	LAM L 1/4-8-V
9068309	LAM L 1/4-6-V	9068112	LAM L 3/8-8-A
9068110	LAM L 1/8-8-A	9068312	LAM L 3/8-8-V
		A = ORANGE	
		V = VERT	

## SOV-L Electrovalves



Cod.	Ref.
9069016	SOV L 3/2 NF 6-6
9069116	SOV L 3/2 NO 6-6
9069024	SOV L 3/2 NF 8-8
9069124	SOV L 3/2 NO 8-8



Cod.	Ref.
9069216	SOV L 3/2 NF 6-6-6
9069316	SOV L 3/2 NO 6-6-6
9069224	SOV L 3/2 NF 8-8-8
9069324	SOV L 3/2 NO 8-8-8



Cod.	Ref.
9069408	SOV L 3/2 NF 6-1/8
9069508	SOV L 3/2 NO 6-1/8
9069409	SOV L 3/2 NF 6-1/4
9069509	SOV L 3/2 NO 6-1/4
9069410	SOV L 3/2 NF 8-1/8
9069510	SOV L 3/2 NO 8-1/8
9069411	SOV L 3/2 NF 8-1/4
9069511	SOV L 3/2 NO 8-1/4
9069412	SOV L 3/2 NF 8-3/8
9069512	SOV L 3/2 NO 8-3/8



Cod.	Ref.
9069608	SOV L 3/2 NF 6-1/8-6
9069708	SOV L 3/2 NO 6-1/8-6
9069609	SOV L 3/2 NF 6-1/4-6
9069709	SOV L 3/2 NO 6-1/4-6
9069610	SOV L 3/2 NF 8-1/8-8
9069710	SOV L 3/2 NO 8-1/8-8
9069611	SOV L 3/2 NF 8-1/4-8
9069711	SOV L 3/2 NO 8-1/4-8
9069612	SOV L 3/2 NF 8-3/8-8
9069712	SOV L 3/2 NO 8-3/8-8

## SQU-L



Cod.	Ref.
9062110	SQU-L

## TUB-L



Cod.	Ref.	Cod.	Ref.
9062216	TUB-L 6-6	9062224	TUB-L 8-8

# MRF

## Micro-régulateurs de débit Unidirectionnels pour vérins

### MRF O M C



Cod.	Ref.
9001001C	MRF O M C 4 M5
9001011C	MRF O M C 4 1/8
9001002C	MRF O M C 5 M5
9001012C	MRF O M C 5 1/8
9001007C	MRF O M C 6 M5
9001003C	MRF O M C 6 1/8
9001004C	MRF O M C 6 1/4
9001005C	MRF O M C 8 1/8
9001006C	MRF O M C 8 1/4
9001008C	MRF O M C 10 1/4
9001009C	MRF O M C 10 3/8
9001014C	MRF O M C 12 1/4
9001015C	MRF O M C 12 3/8
9001016C	MRF O M C 12 1/2

### MRF O T C



Cod.	Ref.
9011001C	MRF O T C 4 M5
9011011C	MRF O T C 4 1/8
9011007C	MRF O T C 6 M5
9011003C	MRF O T C 6 1/8
9011004C	MRF O T C 6 1/4
9011005C	MRF O T C 8 1/8
9011006C	MRF O T C 8 1/4
9011008C	MRF O T C 10 1/4
9011009C	MRF O T C 10 3/8
9011014C	MRF O T C 12 1/4
9011015C	MRF O T C 12 3/8
9011016C	MRF O T C 12 1/2

### MRF O F C



Cod.	Ref.
9001020C	MRF O F C 1/8 1/8
9001021C	MRF O F C 1/4 1/4
9001022C	MRF O F C 3/8 3/8

### CAPUCHON DE SECURITE



Cod.	Ref.
9090001	CAPUCHON DE SEC. POUR MRF O M5
9090002	CAPUCHON DE SEC. POUR MRF O 1/8-1/4
9090003	CAPUCHON DE SEC. POUR MRF O 3/8-1/2

### MRF H T C



Cod.	Ref.
9025002C	MRF H T C 4 1/8
9025006C	MRF H T C 6 1/8
9025007C	MRF H T C 6 1/4
9025008C	MRF H T C 8 1/8
9025009C	MRF H T C 8 1/4
9025011C	MRF H T C 10 1/4
9025014C	MRF H T C 12 1/4

### HIGH-FLOW

### MRF N M C



Cod.	Ref.
9031001C	MRF N M C 4 M5
9031002C	MRF N M C 4 1/8
9031003C	MRF N M C 5 M5
9031004C	MRF N M C 5 1/8
9031005C	MRF N M C 6 M5
9031006C	MRF N M C 6 1/8
9031007C	MRF N M C 6 1/4
9031008C	MRF N M C 8 1/8
9031009C	MRF N M C 8 1/4
9031011C	MRF N M C 10 1/4
9031012C	MRF N M C 10 3/8
9031014C	MRF N M C 12 1/4
9031015C	MRF N M C 12 3/8
9031016C	MRF N M C 12 1/2

### MRF N T C



Cod.	Ref.
9021001C	MRF N T C 4 M5
9021002C	MRF N T C 4 1/8
9021005C	MRF N T C 6 M5
9021006C	MRF N T C 6 1/8
9021007C	MRF N T C 6 1/4
9021008C	MRF N T C 8 1/8
9021009C	MRF N T C 8 1/4
9021011C	MRF N T C 10 1/4
9021012C	MRF N T C 10 3/8
9021014C	MRF N T C 12 1/4
9021015C	MRF N T C 12 3/8
9021016C	MRF N T C 12 1/2

### MRF N F C



Cod.	Ref.
9031301C	MRF N F C 1/8 1/8
9031302C	MRF N F C 1/4 1/4
9031303C	MRF N F C 3/8 3/8

### MRF P T C



Cod.	Ref.
9026002C	MRF P T C 4 1/8
9026006C	MRF P T C 6 1/8
9026007C	MRF P T C 6 1/4
9026008C	MRF P T C 8 1/8
9026009C	MRF P T C 8 1/4
9026011C	MRF P T C 10 1/4
9026014C	MRF P T C 12 1/4

### PUSH-LOCK

### BOUTON DE SECURITE



Cod.	Ref.
90200703	BOUTON DE SECURITE POUR MRF PT

# MRF

Micro-régulateurs de débit  
Unidirectionnels pour Distributeurs



## MRF O M V



Cod.	Ref.
9001110V	MRF O M V 4 M5
9001111V	MRF O M V 4 1/8
9001113V	MRF O M V 5 M5
9001112V	MRF O M V 5 1/8
9001105V	MRF O M V 6 M5
9001101V	MRF O M V 6 1/8
9001102V	MRF O M V 6 1/4
9001103V	MRF O M V 8 1/8
9001104V	MRF O M V 8 1/4
9001106V	MRF O M V 10 1/4
9001114V	MRF O M V 10 3/8
9001123V	MRF O M V 12 1/4
9001124V	MRF O M V 12 3/8
9001125V	MRF O M V 12 1/2

## MRF O T V



Cod.	Ref.
9011110V	MRF O T V 4 M5
9011111V	MRF O T V 4 1/8
9011105V	MRF O T V 6 M5
9011101V	MRF O T V 6 1/8
9011102V	MRF O T V 6 1/4
9011103V	MRF O T V 8 1/8
9011104V	MRF O T V 8 1/4
9011106V	MRF O T V 10 1/4
9011114V	MRF O T V 10 3/8
9011123V	MRF O T V 12 1/4
9011124V	MRF O T V 12 3/8
9011125V	MRF O T V 12 1/2

## MRF O F V



Cod.	Ref.
9001120V	MRF O F V 1/8 1/8
9001121V	MRF O F V 1/4 1/4
9001122V	MRF O F V 3/8 3/8

### CAPUCHON DE SECURITE



Cod.	Ref.
9090001	CAPUCHON DE SEC. POUR MRF O M5
9090002	CAPUCHON DE SEC. POUR MRF O 1/8-1/4
9090003	CAPUCHON DE SEC. POUR MRF O 3/8-1/2

## MRF H T V



Cod.	Ref.
9025102V	MRF H T V 4 1/8
9025106V	MRF H T V 6 1/8
9025107V	MRF H T V 6 1/4
9025108V	MRF H T V 8 1/8
9025109V	MRF H T V 8 1/4
9025111V	MRF H T V 10 1/4
9025114V	MRF H T V 12 1/4

### HIGH FLOW

## MRF N M V



Cod.	Ref.
9031101V	MRF N M V 4 M5
9031102V	MRF N M V 4 1/8
9031103V	MRF N M V 5 M5
9031104V	MRF N M V 5 1/8
9031105V	MRF N M V 6 M5
9031106V	MRF N M V 6 1/8
9031107V	MRF N M V 6 1/4
9031108V	MRF N M V 8 1/8
9031109V	MRF N M V 8 1/4
9031111V	MRF N M V 10 1/4
9031112V	MRF N M V 10 3/8
9031114V	MRF N M V 12 1/4
9031115V	MRF N M V 12 3/8
9031116V	MRF N M V 12 1/2

## MRF N T V



Cod.	Ref.
9021101V	MRF N T V 4 M5
9021102V	MRF N T V 4 1/8
9021105V	MRF N T V 6 M5
9021106V	MRF N T V 6 1/8
9021107V	MRF N T V 6 1/4
9021108V	MRF N T V 8 1/8
9021109V	MRF N T V 8 1/4
9021111V	MRF N T V 10 1/4
9021112V	MRF N T V 10 3/8
9021114V	MRF N T V 12 1/4
9021115V	MRF N T V 12 3/8
9021116V	MRF N T V 12 1/2

## MRF N F V



Cod.	Ref.
9031401V	MRF N F V 1/8 1/8
9031402V	MRF N F V 1/4 1/4
9031403V	MRF N F V 3/8 3/8

## MRF P T V



Cod.	Ref.
9026102V	MRF P T V 4 1/8
9026106V	MRF P T V 6 1/8
9026107V	MRF P T V 6 1/4
9026108V	MRF P T V 8 1/8
9026109V	MRF P T V 8 1/4
9026111V	MRF P T V 10 1/4
9026114V	MRF P T V 12 1/4

### PUSH-LOCK

### BOUTON DE SECURITE



Cod.	Ref.
9200703	BOUTON DE SECURITE POUR MRF PT

# MRF

Micro-régulateurs de débit  
Bidirectionnels

## MRF O M B



Cod.	Ref.
9001601B	MRF O M B 4 M5
9001602B	MRF O M B 4 1/8
9001603B	MRF O M B 5 M5
9001604B	MRF O M B 5 1/8
9001612B	MRF O M B 6 M5
9001605B	MRF O M B 6 1/8
9001606B	MRF O M B 6 1/4
9001607B	MRF O M B 8 1/8
9001608B	MRF O M B 8 1/4
9001609B	MRF O M B 10 1/4
9001610B	MRF O M B 10 3/8
9001623B	MRF O M B 12 1/4
9001624B	MRF O M B 12 3/8
9001625B	MRF O M B 12 1/2

## MRF O T B



Cod.	Ref.
9011601B	MRF O T B 4 M5
9011602B	MRF O T B 4 1/8
9011612B	MRF O T B 6 M5
9011605B	MRF O T B 6 1/8
9011606B	MRF O T B 6 1/4
9011607B	MRF O T B 8 1/8
9011608B	MRF O T B 8 1/4
9011609B	MRF O T B 10 1/4
9011610B	MRF O T B 10 3/8
9011623B	MRF O T B 12 1/4
9011624B	MRF O T B 12 3/8
9011625B	MRF O T B 12 1/2

## MRF O F B



Cod.	Ref.
9001620B	MRF O F B 1/8 1/8
9001621B	MRF O F B 1/4 1/4
9001622B	MRF O F B 3/8 3/8

### CAPUCHON DE SECURITE



Cod.	Ref.
9090001	CAPUCHON DE SEC. POUR MRF O M5
9090002	CAPUCHON DE SEC. POUR MRF O 1/8-1/4
9090003	CAPUCHON DE SEC. POUR MRF O 3/8-1/2

## MRF H T B



Cod.	Ref.
9025602B	MRF H T B 4 1/8
9025606B	MRF H T B 6 1/8
9025607B	MRF H T B 6 1/4
9025608B	MRF H T B 8 1/8
9025609B	MRF H T B 8 1/4
9025611B	MRF H T B 10 1/4
9025614B	MRF H T B 12 1/4

HIGH FLOW

## MRF N M B



Cod.	Ref.
9031201B	MRF N M B 4 M5
9031202B	MRF N M B 4 1/8
9031203B	MRF N M B 5 M5
9031204B	MRF N M B 5 1/8
9031205B	MRF N M B 6 M5
9031206B	MRF N M B 6 1/8
9031207B	MRF N M B 6 1/4
9031208B	MRF N M B 8 1/8
9031209B	MRF N M B 8 1/4
9031211B	MRF N M B 10 1/4
9031212B	MRF N M B 10 3/8
9031214B	MRF N M B 12 1/4
9031215B	MRF N M B 12 3/8
9031216B	MRF N M B 12 1/2

## MRF N T B



Cod.	Ref.
9021201B	MRF N T B 4 M5
9021202B	MRF N T B 4 1/8
9021205B	MRF N T B 6 M5
9021206B	MRF N T B 6 1/8
9021207B	MRF N T B 6 1/4
9021208B	MRF N T B 8 1/8
9021209B	MRF N T B 8 1/4
9021211B	MRF N T B 10 1/4
9021212B	MRF N T B 10 3/8
9021214B	MRF N T B 12 1/4
9021215B	MRF N T B 12 3/8
9021216B	MRF N T B 12 1/2

## MRF N F B



Cod.	Ref.
9031501B	MRF N F B 1/8 1/8
9031502B	MRF N F B 1/4 1/4
9031503B	MRF N F B 3/8 3/8

## MRF P T B



Cod.	Ref.
9026602B	MRF P T B 4 1/8
9026606B	MRF P T B 6 1/8
9026607B	MRF P T B 6 1/4
9026608B	MRF P T B 8 1/8
9026609B	MRF P T B 8 1/4
9026611B	MRF P T B 10 1/4
9026614B	MRF P T B 12 1/4

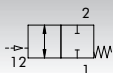
PUSH-LOCK

### BOUTON DE SECURITE

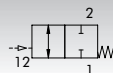


Cod.	Ref.
9200703	BOUTON DE SECURITE POUR MRF PT

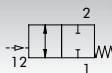
# STP Clapets pilotés



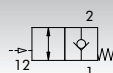
Cod.	Ref.
<b>W6001101001</b>	STP-B 1/8 108 G 1/8 G 1/8 G 1/8
<b>W6001111011</b>	STP-B 1/4 104 G 1/4 G 1/4 G 1/8
<b>W6001121021</b>	STP-B 3/8 138 G 3/8 G 3/8 G 1/8



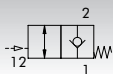
Cod.	Ref.
<b>W6001101002</b>	STP-BX 1/8-1/8 04 G 1/8 G 1/8
<b>W6001111012</b>	STP-BX 1/4-1/4 04 G 1/4 G 1/4
<b>W6001121022</b>	STP-BX 3/8-3/8 04 G 3/8 G 3/8



Cod.	Ref.
<b>W6001101106</b>	STP-B 1/8 006 G 1/8
<b>W6001111106</b>	STP-B 1/4 006 G 1/4
<b>W6001111108</b>	STP-B 1/4 008 G 1/4
<b>W6001121108</b>	STP-B 3/8 008 G 3/8
<b>W6001121110</b>	STP-B 3/8 010 G 3/8
<b>W6001131112</b>	STP-B 1/2 012 G 1/2



Cod.	Ref.
<b>W6001001001</b>	STP-U 1/8 108 G 1/8 G 1/8
<b>W6001011011</b>	STP-U 1/4 114 G 1/4 G 1/4
<b>W6001021021</b>	STP-U 3/8 138 G 3/8 G 3/8



Cod.	Ref.
<b>W6001001106</b>	STP-U 1/8 006 G 1/8
<b>W6001011106</b>	STP-U 1/4 006 G 1/4
<b>W6001011108</b>	STP-U 1/4 008 G 1/4
<b>W6001021108</b>	STP-U 3/8 008 G 3/8
<b>W6001021110</b>	STP-U 3/8 010 G 3/8
<b>W6001031112</b>	STP-U 1/2 012 G 1/2

# BARRETTES

## CARRE



Cod.	Ref.
<b>W0501101001</b>	E1/8 S1/8
<b>W0501111002</b>	E1/4 S1/4
<b>W0501121003</b>	E3/8 S3/8
<b>W0501131004</b>	E1/2 S1/2

## SORTIES SUR 1 COTE



Cod.	Ref.
<b>W0502111001</b>	E2x1/4 S2x1/8
<b>W0502111005</b>	E2x1/4 S3x1/8
<b>W0502111007</b>	E2x1/4 S4x1/8
<b>W0502111009</b>	E2x1/4 S5x1/8
<b>W0502111011</b>	E2x1/4 S6x1/8
<b>W0502121002</b>	E2x3/8 S2x1/4
<b>W0502121006</b>	E2x3/8 S3x1/4
<b>W0502121008</b>	E2x3/8 S4x1/4
<b>W0502121010</b>	E2x3/8 S5x1/4
<b>W0502121012</b>	E2x3/8 S6x1/4
<b>W0502131002</b>	E2x1/2 S2x1/4
<b>W0502131006</b>	E2x1/2 S3x1/4
<b>W0502131008</b>	E2x1/2 S4x1/4
<b>W0502131010</b>	E2x1/2 S5x1/4
<b>W0502131012</b>	E2x1/2 S6x1/4

## SORTIES SUR 2 COTES



Cod.	Ref.
<b>W0503111013</b>	E2x1/4 S2/2x1/8
<b>W0503111015</b>	E2x1/4 S3/3x1/8
<b>W0503111017</b>	E2x1/4 S4/4x1/8
<b>W0503111019</b>	E2x1/4 S5/5x1/8
<b>W0503121014</b>	E2x3/8 S2/2x1/4
<b>W0503121016</b>	E2x3/8 S3/3x1/4
<b>W0503121018</b>	E2x3/8 S4/4x1/4
<b>W0503121020</b>	E2x3/8 S5/5x1/4
<b>W0503131014</b>	E2x1/2 S2/2x1/4
<b>W0503131016</b>	E2x1/2 S3/3x1/4
<b>W0503131018</b>	E2x1/2 S4/4x1/4
<b>W0503131020</b>	E2x1/2 S5/5x1/4

## AVEC RACCORDS INSTANTANES



Cod.	Ref.
<b>7304106</b>	E2x1/8 S6xØ4
<b>7304112</b>	E2x1/8 S12xØ4
<b>7306206</b>	E2x1/4 S6xØ6
<b>7306212</b>	E2x1/4 S12xØ6
<b>7308306</b>	E2x3/8 S6xØ8
<b>7308312</b>	E2x3/8 S12xØ8

# RACCORDS TOURNANTS

## SIMPLES



Cod.	Ref.
<b>W0511101101</b>	1/8 1/8
<b>W0511121121</b>	1/4 1/4
<b>W0511131131</b>	3/8 3/8
<b>W0511141141</b>	1/2 1/2
<b>W0511151151</b>	3/4 3/4
<b>W0511161161</b>	1 1

## SORTIES MULTIPLES



Cod.	Ref.
<b>W0513131101</b>	E3/8 S6x1/8
<b>W0512131121</b>	E3/8 S3x1/4

## 2 OU 3 VOIES INDEPENDANTES



Cod.	Ref.
<b>W0514101101</b>	E2x1/8 S2x1/8
<b>W0514121121</b>	E2x1/4 S2x1/4
<b>W0515121121</b>	E3x1/4 S3x1/4

# VANNES

## MINIATURE F.F.



Cod.	Ref.
E418	VPM 1/8 FF
E414	VPM 1/4 FF
E438	VPM 3/8 FF
E412	VPM 1/2 FF

## MINIATURE M.F.



Cod.	Ref.
E518	VPM 1/8 MF
E514	VPM 1/4 MF
E538	VPM 3/8 MF
E512	VPM 1/2 MF

### A DECOMPRESSION

E714D	VPM 1/4 MF D
E738D	VPM 3/8 MF D
E712D	VPM 1/2 MF D

## F.F.



Cod.	Ref.
E114	VP 1/4 FF 100
E138	VP 3/8 FF 100
E112	VP 1/2 FF 100
E134	VP 3/4 FF 100
E101	VP 1 FF 100

## F.F.F. EN L F.F.F. EN T



Cod.	Ref.
E314L	VP 1/4 FFF en L
E338L	VP 3/8 FFF en L
E312L	VP 1/2 FFF en L
E314T	VP 1/4 FFF en T
E338T	VP 3/8 FFF en T
E312T	VP 1/2 FFF en T

## M.F.



Cod.	Ref.
E114MF	VP 1/4 MF
E138MF	VP 3/8 MF
E112MF	VP 1/2 MF
E134MF	VP 3/4 MF

## F.F. CADENAS. A DECOMPRESSION



Cod.	Ref.
E114CD	VP 1/4 FF CAD.
E138CD	VP 3/8 FF CAD.
E112CD	VP 1/2 FF CAD.
E134CD	VP 3/4 FF CAD.

# VANNES DE REGLAGE DE DEBIT

## M.M.



Cod.	Ref.
E90A0001	ART. 472 1/8 M.M.
E90A0002	ART. 472 1/4 M.M.
E90A0003	ART. 472 3/8 M.M.
E90A0004	ART. 472 1/2 M.M.

## M.F.



Cod.	Ref.
E90A1001	ART. 473 1/8 M.F.
E90A1002	ART. 473 1/4 M.F.
E90A1003	ART. 473 3/8 M.F.
E90A1004	ART. 473 1/2 M.F.

## F.F.



Cod.	Ref.
E90A2001	ART. 474 1/8 F.F.
E90A2002	ART. 474 1/4 F.F.
E90A2003	ART. 474 3/8 F.F.
E90A2004	ART. 474 1/2 F.F.

## FF MONTAGE PANNEAU



Cod.	Ref.
E90A3001	ART. 477 1/8 F.F.
E90A3002	ART. 477 1/4 F.F.
E90A3003	ART. 477 3/8 F.F.
E90A3004	ART. 477 1/2 F.F.

# SILENCIEUX

## SC



Cod.	Ref.
W0970530001	MWSC M5
W0970530002	MWSC 1/8
W0970530003	MWSC 1/4
W0970530004	MWSC 3/8
W0970530005	MWSC 1/2
W0970530006	MWSC 3/4
W0970530007	MWSC 1

## SCQ



Cod.	Ref.
W0970530012	MWSCQ 1/8
W0970530013	MWSCQ 1/4
W0970530014	MWSCQ 3/8
W0970530015	MWSCQ 1/2
W0970530016	MWSCQ 3/4
W0970530017	MWSCQ 1

## SE



Cod.	Ref.
W0970530020	MWSE M7
W0970530021	MWSE M5
W0970530022	MWSE 1/8
W0970530023	MWSE 1/4
W0970530024	MWSE 3/8
W0970530025	MWSE 1/2
W0970530026	MWSE 3/4
W0970530027	MWSE 1

## SL



Cod.	Ref.
W0970530036	MWSL 3/4
W0970530037	MWSL 1
W0970530038	MWSL 1 1/4
W0970530039	MWSL 1 1/2
W0970530040	MWSL 2

## STT



Cod.	Ref.
W0970530042	MWSTT 1/8
W0970530043	MWSTT 1/4
W0970530044	MWSTT 3/8
W0970530045	MWSTT 1/2
W0970530046	MWSTT 3/4
W0970530047	MWSTT 1

## SFE



Cod.	Ref.
W0970530051	MWSFE M5
W0970530052	MWSFE 1/8
W0970530053	MWSFE 1/4
W0970530054	MWSFE 3/8
W0970530055	MWSFE 1/2
W0970530056	MWSFE 3/4
W0970530057	MWSFE 1

## SPL



Cod.	Ref.
W0970530062	MWSPL 1/8
W0970530063	MWSPL 1/4
W0970530064	MWSPL 3/8
W0970530065	MWSPL 1/2
W0970530066	MWSPL 3/4
W0970530067	MWSPL 1

## SPL-F



Cod.	Ref.
W0970530072	MWSPL-F 1/8
W0970530073	MWSPL-F 1/4
W0970530074	MWSPL-F 3/8
W0970530075	MWSPL-F 1/2

## SVE



Cod.	Ref.
W0970520001	MWSVE 1/8
W0970520002	MWSVE 1/4
W0970520003	MWSVE 3/8
W0970520004	MWSVE 1/2
W0970520005	MWSVE 3/4
W0970520006	MWSVE 1

## SVL



Cod.	Ref.
W0970520010	MWSVL M5
W0970520011	MWSVL 1/8
W0970520012	MWSVL 1/4
W0970520013	MWSVL 3/8
W0970520014	MWSVL 1/2
W0970520015	MWSVL 3/4
W0970520016	MWSVL 1

## DSN



Cod.	Ref.
W0970520021	MWDSN 1/8
W0970520022	MWDSN 1/4
W0970520023	MWDSN 3/8
W0970520024	MWDSN 1/2

## DSE



Cod.	Ref.
W0970520031	MWDSE 1/8
W0970520032	MWDSE 1/4

# ACCESSOIRES

## VSR



### VALVES D'ÉCHAPPEMENT RAPIDE

Cod.	Ref.	
9101201	VSR 1/8	
9201201	VSR 1/4	
9401201	VSR 1/2	

## VCS



### DOUILLES COULISSANTES

Cod.	Ref.	
W0970050001	VCS 3/2 1/8	
W0970050002	VCS 3/2 1/4	
W0970050003	VCS 3/2 3/8	
W0970050004	VCS 3/2 1/2	

## VNR



### CLAPETS ANTI-RETOUR

Cod.	Ref.	
W3601000001	VNR 1/8	
W3601000002	VNR 1/4	

## VOR



### SELECTEURS DE CIRCUIT

Cod.	Ref.	
W3603000001	VOR 1/8	
W3603000002	VOR 1/4	

## RMV



### REGULATEUR DE PRESSION

Cod.	Ref.	
9061601	RMV 1/8	

### COUPE-TUBE PLASTIQUE



Cod. Ref.  
**4050001** Ø4-14

### COUPE-TUBE METALLIQUE



Cod. Ref.  
**4050003** PETITE MODELE  
**4050005** GRAND MODELE

### SOUFFLETES PLASTIQUES



Cod. Ref.  
**EA204000** BUSE STANDARD  
**EA204100** BUSE LONGUE

### SOUFFLETTE METALLIQUE



Cod. Ref.  
**VS14** SOUFFLETTE METAL.

## MANOMETRES BOITIER ABS

### PRISE ARRIERE CENTREE



Cod. Ref.  
**9700103** D40 R1/8 0-2.5 B/PSI  
**9700104** D40 R1/8 0-4 B/PSI  
**9700105** D40 R1/8 0-6 B/PSI  
**9700107** D40 R1/8 0-12 B/PSI  
**9700108** D40 R1/8 0-16 B/PSI

Cod. Ref.  
**9800104** D50 R1/8 0-4 B/PSI  
**9800106** D50 R1/8 0-10 B/PSI  
**9800107** D50 R1/8 0-12 B/PSI  
**9900107** D63 R1/8 0-12 B/PSI  
**9900207** D63 R1/4 0-12 B/PSI

### PRISE RADIALE



Cod. Ref.  
**9760104** D40 R1/8 0-4B/PSI  
**9760107** D40 R1/8 0-12B/PSI  
**9860104** D50 R1/8 0-4 B/PSI  
**9860107** D50 R1/8 0-12B/PSI  
**9960207** D63 R1/4 0-12B/PSI

### MONTAGE PANNEAU



Cod. Ref.  
**9730102** D40 G1/8B 0-1.6B/PSI  
**9730104** D40 G1/8B 0-2.5B/PSI  
**9830103** D50 G1/8B 0-2.5B/PSI  
**9830104** D50 G1/8B 0-4B/PSI  
**9830105** D50 G1/8B 0-6B/PSI  
**9830106** D50 G1/8B 0-10B/PSI  
**9830107** D50 G1/8B 0-12B/PSI

## MANOMETRES BOITIER INOX

### PRISE ARRIERE CENTREE



Cod. Ref.  
**9940202** D 63 1/4 0-1.6B/PSI  
**9940203** D 63 1/4 0-2.5B/PSI  
**9940204** D 63 1/4 0-4B/PSI  
**9940205** D 63 1/4 0-6B/PSI  
**9940206** D 63 1/4 0-10B/PSI

Cod. Ref.  
**9940207** D 63 1/4 0-16B/PSI  
**9940208** D 63 1/4 0-25B/PSI  
**9940209** D 63 1/4 0-40B/PSI  
**9940210** D 63 1/4 0-60B/PSI  
**9940211** D 63 1/4 0-100 B/PSI

### PRISE RADIALE



Cod. Ref.  
**9970202** D 63 1/4 0-1.6B/PSI  
**9970203** D 63 1/4 0-2.5B/PSI  
**9970204** D 63 1/4 0-4B/PSI  
**9970205** D 63 1/4 0-6B/PSI  
**9970206** D 63 1/4 0-10B/PSI

Cod. Ref.  
**9970207** D 63 1/4 0-16B/PSI  
**9970208** D 63 1/4 0-25B/PSI  
**9970209** D 63 1/4 0-40B/PSI  
**9970210** D 63 1/4 0-60B/PSI  
**9970211** D 63 1/4 0-100B/PSI

# TUBES

## TUBES POLYAMIDE PA 12



Diamètre	Longueur	Naturel	Bleu	Noir	Rouge	Vert	Jaune
2 X 4	25 m	7003002	7013002	7023002	7033002	7043002	7053002
2 X 4	100 m	7003102	7013102	7023102	7033102	7043102	7053102
2,7 X 4	25 m	7003001	7013001	7023001	7033001	7043001	7053001
2,7 X 4	100 m	7003101	7013101	7023101	7033101	7043101	7053101
3 X 5	100 m	7003103	7013103	7023103			
4 X 6	25 m	7003004	7013004	7023004	7033004	7043004	7053004
4 X 6	100 m	7003104	7013104	7023104	7033104	7043104	7053104
6 X 8	25 m	7003006	7013006	7023006	7033006	7043006	7053006
6 X 8	100 m	7003106	7013106	7023106	7033106	7043106	7053106
8 X 10	25 m	7003007	7013007	7023007	7033007	7043007	
8 X 10	100 m	7003107	7013107	7023107	7033107	7043107	
10 X 12	25 m	7003009	7013009	7023009			
10 X 12	100 m	7003109					
11 X 14	50 m	7003012					
11 X 14	100 m	7003212					
12 X 14	25 m	7003011					
12 X 14	100 m	7003111					
13 X 16	25 m	7003014					
13 X 16	50 m	7003214					

AUTRES COULEURS CONSULTER METAL WORK France

## POLYURETHANE PUR 98



Diamètre	Longueur	Naturel	Bleu	Noir	Rouge	Vert	Jaune
2,5 X 4	25 m	7004001	7014001	7024001	7034001	7044001	7054001
2,5 X 4	100 m	7004101	7014101	7024101	7034101	7044101	
4 X 6	25 m	7004004	7014004	7024004	7034004	7044004	7054004
4 X 6	100 m	7004104	7014104	7024104	7034104	7044104	7054104
5,5 X 8	25 m	7004006	7014006	7024006	7034006	7044006	7054006
5,5 X 8	100 m	7004106	7014106	7024106	7034106		
6 X 8	25 m	7004007	7014007	7024007		7044007	7054007
6 X 8	100 m	7004107	7014107	7024107			
7 X 10	25 m	7004008	7014008	7024008	7034008		7054008
7 X 10	100 m	7004108	7014108	7024108			7054108
8 X 12	25 m	7004010	7014010	7024010			
8 X 12	100 m	7004110	7014110				

AUTRES COULEURS CONSULTER METAL WORK France

# TUBES SPIRALES

## POLYAMIDE BLEU A SORTIES RADIALES



Diamètre	Longueur utile	Code	
<b>2,5X4</b>	6,5 M	<b>7012003</b>	
	<b>4X6</b>	5 M	<b>7012007</b>
	10 M	<b>7012008</b>	
	15 M	<b>7012009</b>	
<b>6X8</b>	5 M	<b>7012012</b>	
	10 M	<b>7012013</b>	
	15 M	<b>7012014</b>	
<b>8X10</b>	5 M	<b>7012017</b>	
	10 M	<b>7012018</b>	
	15 M	<b>7012019</b>	
<b>10X12</b>	20 M	<b>7012030</b>	
<b>12x16</b>	20 M	<b>7012045</b>	

## POLYAMIDE BLEU A SORTIES AXIALES



Diamètre	Longueur utile	Code
<b>2,5X4</b>	1,5M	<b>7012A02</b>
	5 M	<b>7012A03</b>
<b>4X6</b>	5 M	<b>7012A08</b>
	10 M	<b>7012A09</b>
<b>6X8</b>	5 M	<b>7012A13</b>
	6,5 M	<b>7012A14</b>
	10 M	<b>7012A15</b>
<b>8X10</b>	3 M	<b>7012A17</b>
	5 M	<b>7012A18</b>
	7,5 M	<b>7012A19</b>
	10 M	<b>7012A20</b>
<b>10X12</b>	5 M	<b>7012A22</b>
	6,5 M	<b>7012A23</b>
	10 M	<b>7012A24</b>

AUTRES COULEURS CONSULTER METAL WORK France

## POLYURETHANE BLEU A SORTIES AXIALES



Diamètre	Longueur utile	Code	Diamètre	Longueur utile	Code
<b>2,5x4</b>	1 M	<b>7011A02</b>	<b>6,5X10</b>	2 M	<b>7011A32</b>
	2 M	<b>7011A03</b>		4 M	<b>7011A35</b>
	3 M	<b>7011A04</b>		6 M	<b>7011A37</b>
<b>4X6</b>	1,5 M	<b>7011A12</b>		8 M	<b>7011A39</b>
	3 M	<b>7011A14</b>		10 M	<b>7011A40</b>
	6 M	<b>7011A18</b>	<b>8X12</b>	2 M	<b>7011A42</b>
<b>5,5X8</b>	2 M	<b>7011A23</b>		3 M	<b>7011A45</b>
	4 M	<b>7011A25</b>		6 M	<b>7011A47</b>
	6 M	<b>7011A27</b>		8 M	<b>7011A49</b>
	8 M	<b>7011A29</b>		10 M	<b>7011A50</b>
	10 M	<b>7011A30</b>			

AUTRES COULEURS CONSULTER METAL WORK France

# AUTRES TUBES

## MULTITUBES POLYAMIDE PA11 DE COULEUR GAINE EXTERIEURE POLYURETHANE BLEUE

Diamètre	Longueur			Nb de tubes									
	25 M	50 M	100 M	2	3	4	5	6	7	8	9	10	12
2 X 4		•	•	•	•	•	•	•	•	•	•	•	•
2,7 X 4		•		•	•	•	•	•	•	•	•	•	•
4 X 6			•	•	•	•	•	•	•	•	•	•	•
6 X 8	•	•		•	•	•	•	•	•				
8 X 10		•	•	•	•	•							
10 X 12		•		•									

## MULTITUBES POLYURETHANE SANS GAINE DE PROTECTION

Diamètre	Nb de tubes	Couleur	Longueur	Cod.
2,5 X 4	2	Bleu Noir	100 M	MTE2.5X4X2-100
2,5 X 4	4	Bleu+numéros	100 M	MTE2.5X4X4-100
2 X 4	2	Bleu Noir	100 M	MTE2X4X2-100
2 X 4	4	Bleu+numéros	100 M	MTE2X4X4-100
4 X 6	2	Bleu Noir	100 M	MTE4X6X2-100
4 X 6	4	Bleu+numéros	100 M	MTE4X6X4-100
6 X 8	2	Bleu Noir	100 M	MTE6X8X2-100
6 X 8	4	Bleu+numéros	100 M	MTE6X8X4-100
2,5 X 4+4 X 6	1+1	Bleu Noir	100 M	MTE25X4+4X6-100

AUTRES COULEURS CONSULTER METAL WORK France

## POLYAMIDE PA 12 NOIR ANTISTATIQUE

Diamètre.	Longueur	Cod.
2,5 X 4	100 M	ASR25X4N100
4 X 6	100 M	ASR4X6N100
6 X 8	100 M	ASR6X8N100
8 X 10	100 M	ASR8X10N100
10 X 12	100 M	ASR10X12N100

## ALUMINIUM GAINÉ POLYETHYLENE

Dia. Ext.	Longueur	Cod.
6	25 M	ALPE 6 N 25
8	25 M	ALPE 8 N 25
10	25 M	ALPE 10 N 25
12	25 M	ALPE 12 N 25
14	25 M	ALPE 14 N 25

## TUYAU SOUPLE PVC TRANSPARENT Renforcé par tresse textile. Qualité Alimentaire

Pression de service 10 bar			Pression de service 15 bar					
Diamètre	Longueur	Cod.	Diamètre	Longueur	Cod.	Diamètre	Longueur	Cod.
4 X 8	25 M	7080001	4 X 10	50 M	7080011	19 X 27	25 M	7080021
6,3 X 11	50 M	7080002	6 X 12	25 M	7080012	20 X 28	25 M	7080022
8 X 13	25 M	7080003	7 X 13	25 M	7080013	25 X 34	25 M	7080023
10 X 15	25 M	7080004	8 X 14	25 M	7080014	25 X 36	25 M	7080024
12,5 X 18	25 M	7080005	9 X 15	25 M	7080015	30 X 41	25 M	7080025
16 X 22	25 M	7080006	10 X 16	25 M	7080016	32 X 42	25 M	7080026
19 X 26	25 M	7080007	12 X 19	25 M	7080017	38 X 48	25 M	7080027
25 X 33	25 M	7080008	13 X 20	25 M	7080018	40 X 52	25 M	7080028
			15 X 23	25 M	7080019	50 X 64	25 M	7080029



### Metal Work France Sarl

Siège Social

Parc d'Activités de l'Esplanade

14 Rue Enrico Fermi

77462 Saint Thibault Des Vignes

Tél. 01 60 94 00 00

Fax 01 60 94 01 94

e-mail: [metalwork@metalwork.fr](mailto:metalwork@metalwork.fr)

web: [www.metalwork.fr](http://www.metalwork.fr)

### Agence Sud-Est

7/9 Rue du 35ème Régiment d'Aviation

BP50

69672 Bron

Tél. 04 72 15 00 00

Fax 01 60 94 01 94

e-mail: [agence.sudest@metalwork.fr](mailto:agence.sudest@metalwork.fr)